

CD2 Monoclonal Antibody(3F3)

Catalog No: #44037

Package Size: #44037-1 50ul #44037-2 100ul

Orders: order@signalwayantibody.com

Support: tech@signalwayantibody.com

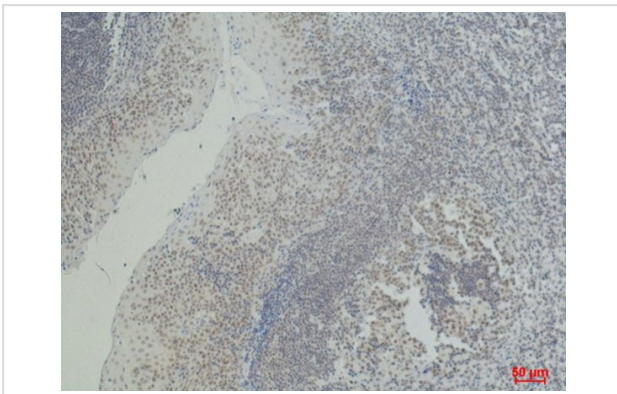
Description

Product Name	CD2 Monoclonal Antibody(3F3)
Host Species	Mouse
Clonality	Monoclonal
Clone No.	3F3
Isotype	IgG1
Applications	IHC
Species Reactivity	Hu Ms Rt
Specificity	The antibody detects endogenous CD2 proteins.
Immunogen Type	Peptide
Immunogen Description	Synthetic Peptide
Target Name	CD2
Other Names	CD2; SRBC; T-cell surface antigen CD2; Erythrocyte receptor; LFA-2; LFA-3 receptor; Rosette receptor; T-cell surface antigen T11/Leu-5; CD2
Accession No.	Swiss-Prot:P06729Gene ID:914
Uniprot	P06729
GeneID	914;
Concentration	1mg/ml
Formulation	Liquid in PBS containing 50% glycerol, 0.5% BSA and 0.02% sodium azide.
Storage	Store at -20°C/1 year

Application Details

Immunohistochemistry: 1:50-1:200

Images



Immunohistochemical analysis of paraffin-embedded Human Tonsil Carcinoma using CD2 Mouse mAb diluted at 1:500.

Note: This product is for in vitro research use only