

CD4 Monoclonal Antibody(11A1)

Catalog No: #44038

Package Size: #44038-1 50ul #44038-2 100ul

Orders: order@signalwayantibody.comSupport: tech@signalwayantibody.com

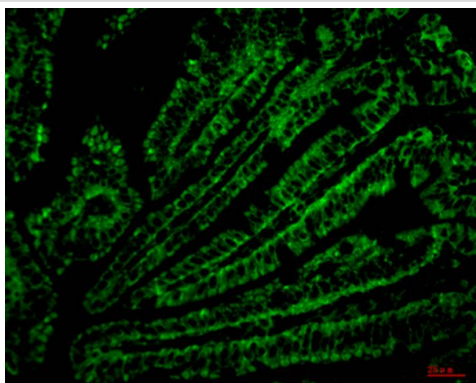
Description

Product Name	CD4 Monoclonal Antibody(11A1)
Host Species	Mouse
Clonality	Monoclonal
Clone No.	11A1
Isotype	IgG1
Applications	IHC IF
Species Reactivity	Hu Ms Rt
Specificity	The antibody detects endogenous CD4 proteins.
Immunogen Type	Peptide
Immunogen Description	Synthetic Peptide
Target Name	CD4
Other Names	CD4; T-cell surface glycoprotein CD4; T-cell surface antigen T4/Leu-3; CD4
Accession No.	Swiss-Prot:P01730Gene ID:920
Uniprot	P01730
GeneID	920;
Concentration	1mg/ml
Formulation	Liquid in PBS containing 50% glycerol, 0.5% BSA and 0.02% sodium azide.
Storage	Store at -20°C/1 year

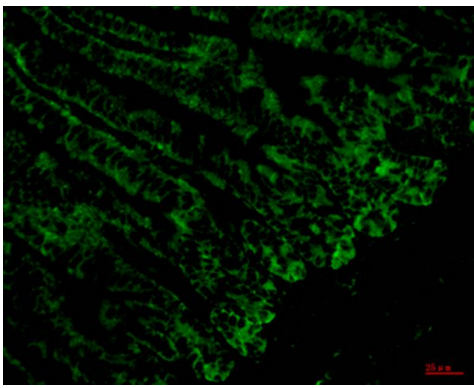
Application Details

Immunohistochemistry: 1:50-1:200

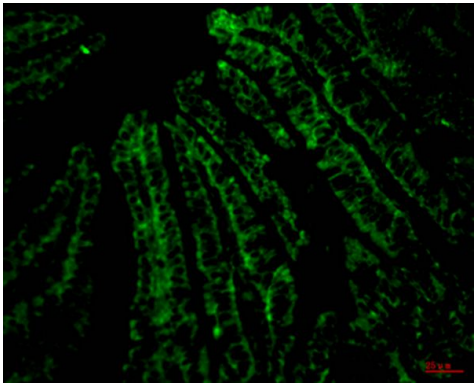
Images



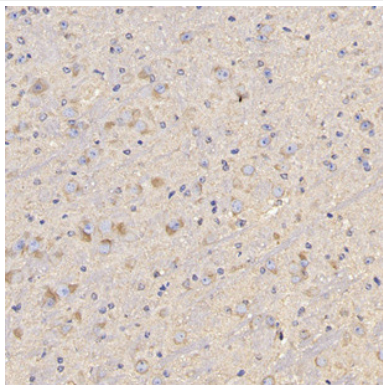
Immunofluorescence analysis of paraffin-embedded Mouse Colonic tissue



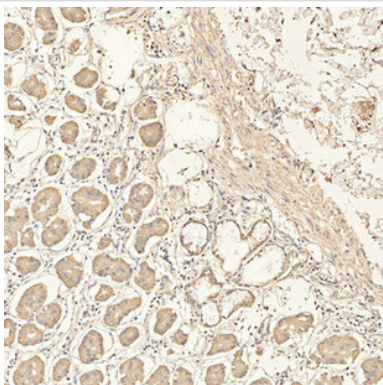
Immunofluorescence analysis of paraffin-embedded Mouse Colonic tissue



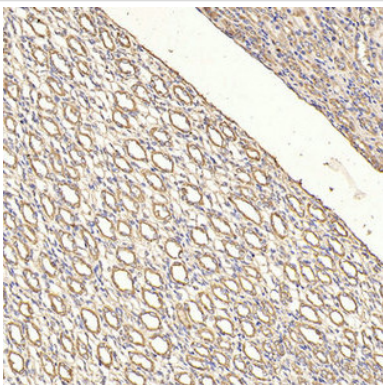
Immunofluorescence analysis of paraffin-embedded Mouse Colonic tissue



Immunohistochemical analysis of paraffin-embedded Mouse brain tissue using #44038 at dilution 1/200



Immunohistochemical analysis of paraffin-embedded Human stomach tissue using #44038 at dilution 1/200



Immunohistochemical analysis of paraffin-embedded Rat kidney tissue using #44038 at dilution 1/200

Note: This product is for in vitro research use only