

## CD10 Monoclonal Antibody(5B8)

Catalog No: #44040

Package Size: #44040-1 50ul #44040-2 100ul

Orders: order@signalwayantibody.com

Support: tech@signalwayantibody.com

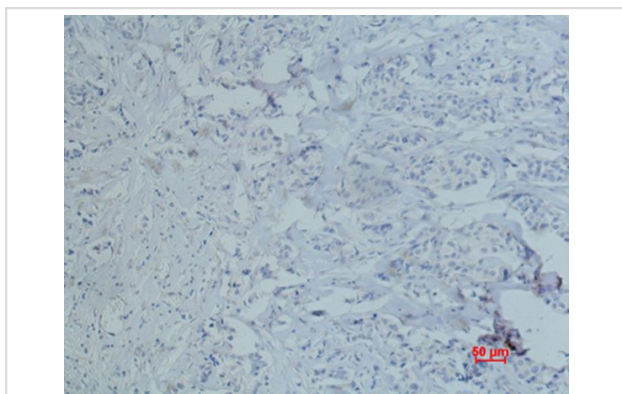
## Description

Product Name	CD10 Monoclonal Antibody(5B8)
Host Species	Mouse
Clonality	Monoclonal
Clone No.	5B8
Isotype	IgG1
Applications	IHC
Species Reactivity	Hu Ms Rt
Specificity	The antibody detects endogenous CD10 proteins.
Immunogen Type	Peptide
Immunogen Description	Synthetic Peptide
Target Name	CD10
Other Names	MME; EPN; Nephylisin; Atriopeptidase; Common acute lymphocytic leukemia antigen; CALLA; Enkephalinase; Neutral endopeptidase 24.11; NEP; Neutral endopeptidase; Skin fibroblast elastase; SFE; CD10
Accession No.	Swiss-Prot:P08473Gene ID:4311
Uniprot	P08473
GeneID	4311;
Concentration	1mg/ml
Formulation	Liquid in PBS containing 50% glycerol, 0.5% BSA and 0.02% sodium azide.
Storage	Store at -20°C/1 year

## Application Details

Immunohistochemistry: 1:50-1:200

## Images



Immunohistochemical analysis of paraffin-embedded human-breast-cancer using antibody diluted at 1:50.

---

Note: This product is for in vitro research use only