

## CD41 Monoclonal Antibody(Q90)

Catalog No: #44042

Package Size: #44042-1 50ul #44042-2 100ul

Orders: order@signalwayantibody.com

Support: tech@signalwayantibody.com

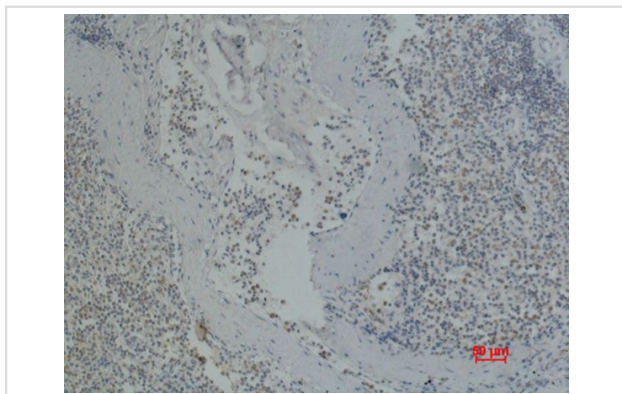
## Description

Product Name	CD41 Monoclonal Antibody(Q90)
Host Species	Mouse
Clonality	Monoclonal
Clone No.	Q90
Isotype	IgG1
Applications	IHC
Species Reactivity	Hu
Specificity	The antibody detects endogenous human CD41/ Intergrin $\alpha$ 2b protein.
Immunogen Type	Peptide
Immunogen Description	Synthetic Peptide
Target Name	CD41
Other Names	ITGA2B; GP2B; ITGAB; Integrin alpha-IIb; GPalpha IIb; GPIIb; Platelet membrane glycoprotein IIb; CD41
Accession No.	Swiss-Prot:P08514Gene ID:3674
Uniprot	P08514
GeneID	3674;
Concentration	1mg/ml
Formulation	Liquid in PBS containing 50% glycerol, 0.5% BSA and 0.02% sodium azide.
Storage	Store at -20°C/1 year

## Application Details

Immunohistochemistry: 1:50-1:200

## Images



Immunohistochemical analysis of paraffin-embedded Human Spleen using CD41 Mouse mAb diluted at 1:200.

---

Note: This product is for in vitro research use only