

CD25 Monoclonal Antibody(Q22)

Catalog No: #44043

Package Size: #44043-1 50ul #44043-2 100ul

Orders: order@signalwayantibody.com

Support: tech@signalwayantibody.com

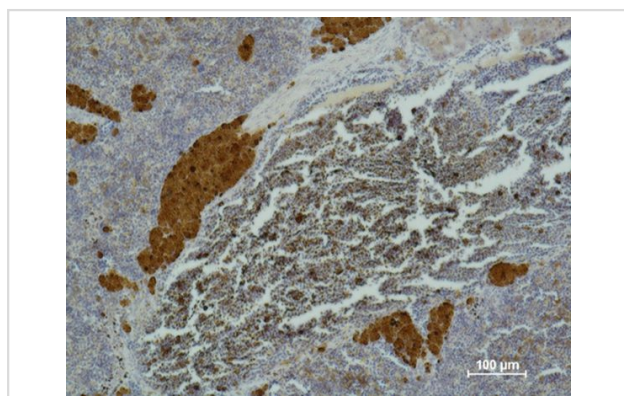
Description

Product Name	CD25 Monoclonal Antibody(Q22)
Host Species	Mouse
Clonality	Monoclonal
Clone No.	Q22
Isotype	IgG1
Applications	IHC
Species Reactivity	Hu
Specificity	The antibody detects endogenous human CD25 protein.
Immunogen Type	Peptide
Immunogen Description	Synthetic Peptide
Target Name	CD25
Other Names	IL2RA; Interleukin-2 receptor subunit alpha; IL-2 receptor subunit alpha; IL-2-RA; IL-2R subunit alpha; IL2-RA; TAC antigen; p55; CD25
Accession No.	Swiss-Prot:P01589Gene ID:3559
Uniprot	P01589
GeneID	3559;
Concentration	1mg/ml
Formulation	Liquid in PBS containing 50% glycerol, 0.5% BSA and 0.02% sodium azide.
Storage	Store at -20°C/1 year

Application Details

Immunohistochemistry: 1:50-1:200

Images



Immunohistochemical analysis of paraffin-embedded Mouse Spleen Tissue using CD 25 Mouse mAb diluted at 1:500.

Note: This product is for in vitro research use only