

## Phosphotyrosine Monoclonal antibody(2C1)

Catalog No: #12829

Package Size: #12829-1 50ul #12829-2 100ul

Orders: order@signalwayantibody.com

Support: tech@signalwayantibody.com

## Description

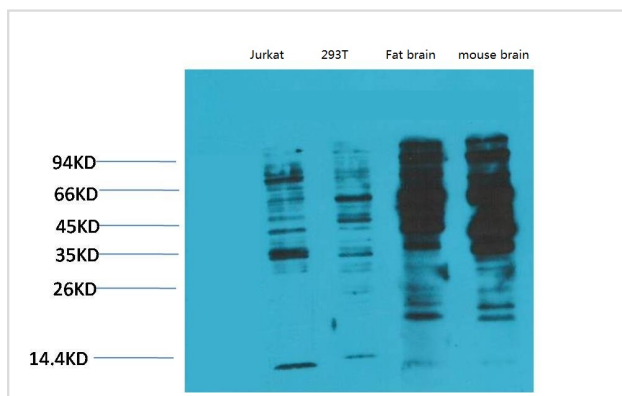
Product Name	Phosphotyrosine Monoclonal antibody(2C1)
Host Species	Mouse
Clonality	Monoclonal
Clone No.	2C1
Isotype	IgG1
Applications	WB IHC
Specificity	The antibody detects endogenous Phosphotyrosine Monoclonal Antibody(2C1)
Immunogen Type	Recombinant Protein
Immunogen Description	Recombinant Protein
Target Name	Phosphotyrosine
Other Names	Phosphotyrosine
Concentration	1mg/ml
Formulation	Liquid in PBS containing 50% glycerol, 0.5% BSA and 0.02% sodium azide.
Storage	Store at -20°C/1 year

## Application Details

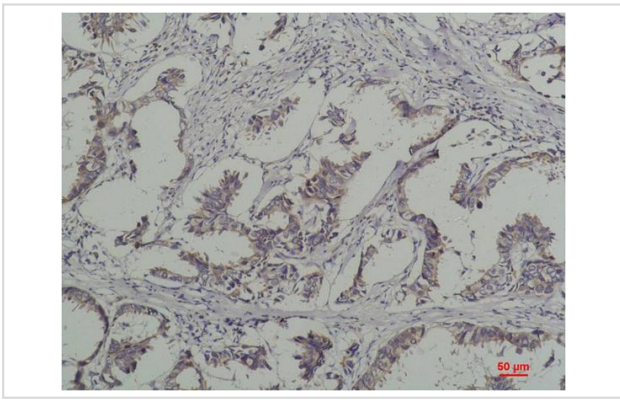
Western blotting: 1:1000-1:3000

Immunohistochemistry: 1:50-1:200

## Images



Western blot analysis of 1) Jurkat, 2) 293T, 3) Rat Brain Tissue, 4) Mouse Brain Tissue with Phosphotyrosine Mouse mAb diluted at 1:2,000.



Immunohistochemical analysis of paraffin-embedded Human Breast Carcinoma using Phosphotyrosine Mouse mAb diluted at 1:200.

---

Note: This product is for in vitro research use only