

CaMKII $\beta/\gamma/\delta$ (Phospho Thr287) Monoclonal Antibody(1B9)

Catalog No: #12831

Orders: order@signalwayantibody.comSupport: tech@signalwayantibody.com

Package Size: #12831-1 50ul #12831-2 100ul

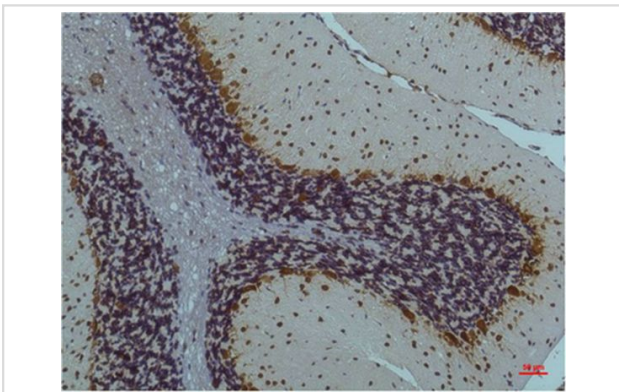
Description

Product Name	CaMKII $\beta/\gamma/\delta$ (Phospho Thr287) Monoclonal Antibody(1B9)
Host Species	Mouse
Clonality	Monoclonal
Clone No.	1B9
Isotype	IgG1
Applications	IHC
Species Reactivity	Hu Rt Ms
Specificity	CaMKII $\beta/\gamma/\delta$ (Phospho Thr287) Mouse Monoclonal Antibody(1B9) detects endogenous levels of CaMKII $\beta/\gamma/\delta$ (Phospho Thr287)
Immunogen Type	Peptide
Immunogen Description	Synthetic Peptide
Target Name	CaMKII $\beta/\gamma/\delta$
Modification	Phospho
Accession No.	Swiss-Prot:Q13554/Q13555/Q13557 Gene ID:816/818/817
Uniprot	Q13554
GeneID	816;
Calculated MW	50kd
Concentration	1mg/ml
Formulation	Liquid in PBS containing 50% glycerol, 0.5% BSA and 0.02% sodium azide.
Storage	Store at -20°C/1 year

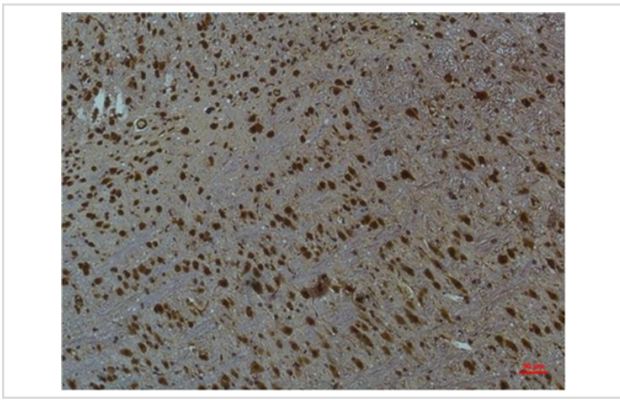
Application Details

Immunohistochemistry: 1:100-1:200

Images



Immunohistochemical analysis of paraffin-embedded Rat Brain Tissue using CaMKII $\beta/\gamma/\delta$ (Phospho Thr287) (mAb diluted at 1:200).



Immunohistochemical analysis of paraffin-embedded Mouse Brain Tissue using CaMKIIβ/ γ /δ (Phospho Thr287) Mouse mAb diluted at 1:200.

Note: This product is for in vitro research use only