

HSPB8/HSP22 Monoclonal Antibody(2C3)

Catalog No: #44107

Package Size: #44107-1 50ul #44107-2 100ul

Orders: order@signalwayantibody.comSupport: tech@signalwayantibody.com

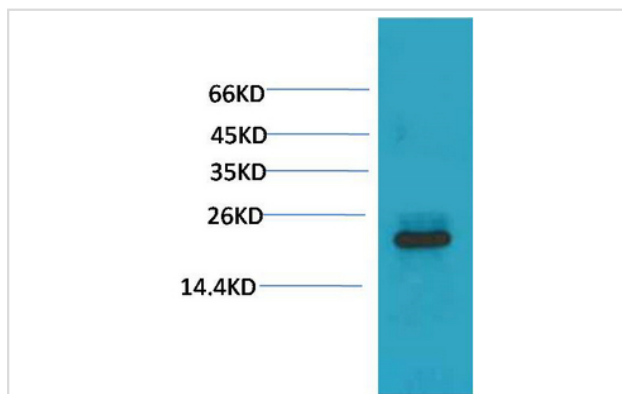
Description

Product Name	HSPB8/HSP22 Monoclonal Antibody(2C3)
Host Species	Mouse
Clonality	Monoclonal
Clone No.	2C3
Isotype	IgG1
Applications	WB
Species Reactivity	Hu Rt Ms
Specificity	HSPB8/HSP22 Mouse Monoclonal Antibody(2C3) detects endogenous levels of HSPB8/HSP22
Immunogen Type	Recombinant protein
Immunogen Description	Recombinant Protein
Target Name	HSPB8/HSP22
Accession No.	Swiss-Prot:Q9UJY1Gene ID:26353
Uniprot	Q9UJY1
GeneID	26353;
Calculated MW	22kd
Concentration	1mg/ml
Formulation	Liquid in PBS containing 50% glycerol, 0.5% BSA and 0.02% sodium azide.
Storage	Store at -20°C/1 year

Application Details

Western blotting: 1:1000-1:2000

Images



Western blot analysis of 293T with HSPB8/HSP22 Mouse mAb diluted at 1:2,000.

Note: This product is for in vitro research use only