

STAT1 Mouse Monoclonal Antibody(12E8)

Catalog No: #44137

Package Size: #44137-1 50ul #44137-2 100ul

Orders: order@signalwayantibody.com

Support: tech@signalwayantibody.com

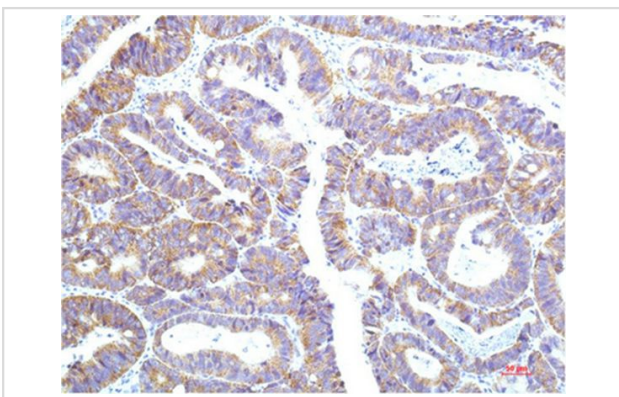
Description

Product Name	STAT1 Mouse Monoclonal Antibody(12E8)
Host Species	Mouse
Clonality	Monoclonal
Clone No.	1.20E+09
Isotype	IgG1
Applications	IHC
Species Reactivity	Hu Rt Ms
Specificity	STAT1 Mouse Monoclonal Antibody(12E8) detects endogenous levels of STAT1
Immunogen Type	Peptide
Immunogen Description	Synthetic Peptide
Target Name	STAT1
Other Names	STAT1
Accession No.	Swiss-Prot:P42224Gene ID:6772
Uniprot	P42224
GeneID	6772;
Calculated MW	84,91kd
Concentration	1mg/ml
Formulation	Liquid in PBS containing 50% glycerol, 0.5% BSA and 0.02% sodium azide.
Storage	Store at -20°C/1 year

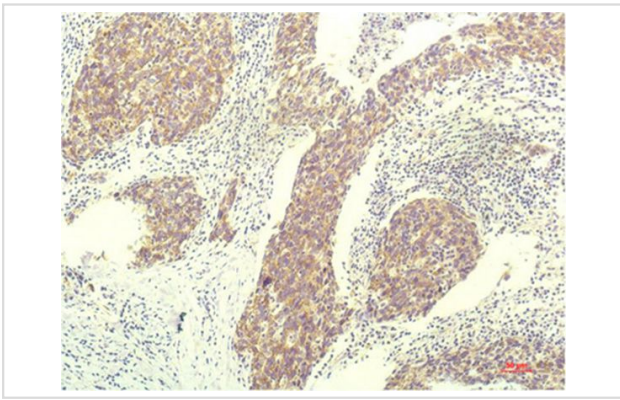
Application Details

Immunohistochemistry: 1:100-1:200

Images



Immunohistochemical analysis of paraffin-embedded Human Colon Carcinoma Tissue using STAT1 Mouse mAb diluted at 1:200



Immunohistochemical analysis of paraffin-embedded Human Breast Carcinoma Tissue using STAT1 Mouse mAb diluted at 1:200.

Note: This product is for in vitro research use only