

SGK1 Mouse Monoclonal Antibody(4D12)

Catalog No: #44142

Package Size: #44142-1 50ul #44142-2 100ul

Orders: order@signalwayantibody.com

Support: tech@signalwayantibody.com

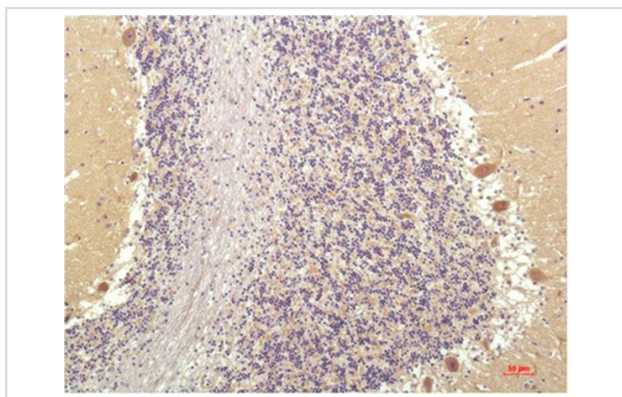
Description

Product Name	SGK1 Mouse Monoclonal Antibody(4D12)
Host Species	Mouse
Clonality	Monoclonal
Clone No.	4D12
Isotype	IgG1
Applications	IHC
Species Reactivity	Hu Rt Ms
Specificity	SGK1 Mouse Monoclonal Antibody(4D12) detects endogenous levels of SGK1
Immunogen Type	Peptide
Immunogen Description	Synthetic Peptide
Target Name	SGK1
Other Names	SGK1
Accession No.	Swiss-Prot:O00141Gene ID:6446
Uniprot	O00141
GeneID	6446;
Calculated MW	45-60kd
Concentration	1mg/ml
Formulation	Liquid in PBS containing 50% glycerol, 0.5% BSA and 0.02% sodium azide.
Storage	Store at -20°C/1 year

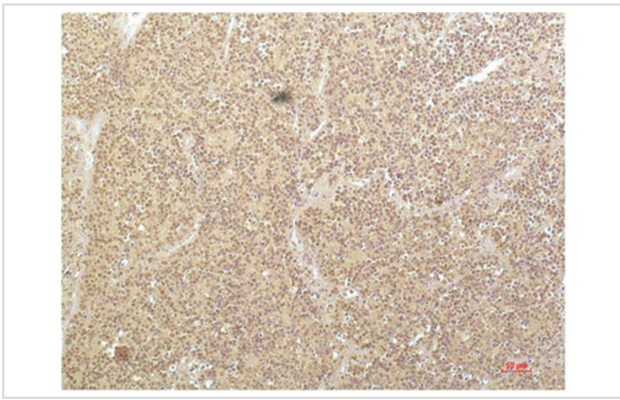
Application Details

Immunohistochemistry: 1:100-1:200

Images



Immunohistochemical analysis of paraffin-embedded Human Brain Tissue using SGK1 Mouse mAb diluted at 1:200.



Immunohistochemical analysis of paraffin-embedded Human Kidney Carcinoma Tissue using SGK1 Mouse mAb diluted at 1:200.

Note: This product is for in vitro research use only