

Phospho-ERK 1/2 (Y222/205) Mouse Monoclonal Antibody(4G3)

Catalog No: #12834

Orders: order@signalwayantibody.comSupport: tech@signalwayantibody.com

Package Size: #12834-1 50ul #12834-2 100ul

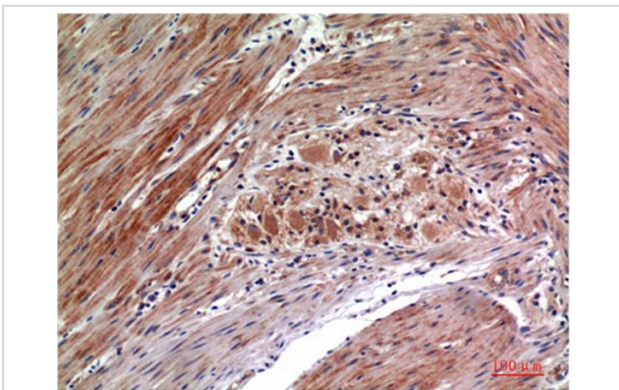
Description

Product Name	Phospho-ERK 1/2 (Y222/205) Mouse Monoclonal Antibody(4G3)
Host Species	Mouse
Clonality	Monoclonal
Clone No.	4G3
Isotype	IgG1
Applications	IHC
Species Reactivity	Hu Rt Ms
Specificity	Phospho-ERK 1/2 (Y222/205) Mouse Monoclonal Antibody(4G3) detects endogenous levels of MAPK1/MAPK3
Immunogen Type	Peptide
Immunogen Description	Synthetic Peptide
Target Name	ERK 1/2
Modification	Phospho
Other Names	MAPK1/MAPK3
Accession No.	Swiss-Prot:P27361/P28482 Gene ID:5595/5594
Uniprot	P27361
GeneID	5595;
Calculated MW	44,42kd
Concentration	1mg/ml
Formulation	Liquid in PBS containing 50% glycerol, 0.5% BSA and 0.02% sodium azide.
Storage	Store at -20°C/1 year

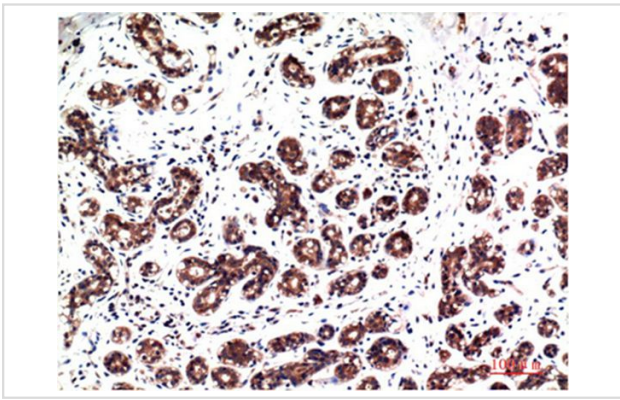
Application Details

Immunohistochemistry: 1:100-1:200

Images



Immunohistochemical analysis of paraffin-embedded Human Colon Carcinoma Tissue using Phospho-ERK1/2 Y222/205 Mouse mAb diluted at 1:200



Immunohistochemical analysis of paraffin-embedded Human Breast Carcinoma Tissue using Phospho-ERK1/2 Y222/205 Mouse mAb diluted at 1:200.

Note: This product is for in vitro research use only