

GSK3 $\beta$  Mouse Monoclonal Antibody(2C6)

Catalog No: #44161

Package Size: #44161-1 50ul #44161-2 100ul

Orders: order@signalwayantibody.com

Support: tech@signalwayantibody.com

## Description

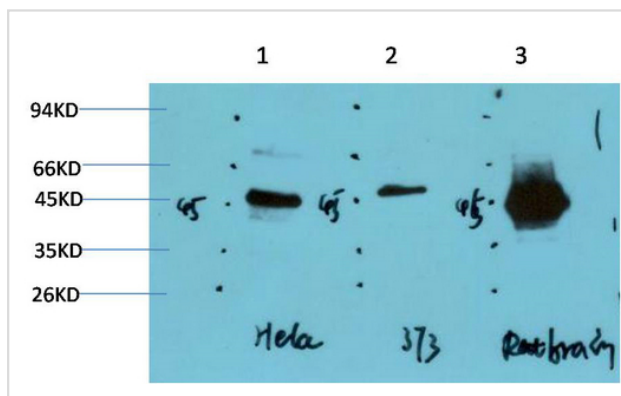
Product Name	GSK3 $\beta$ Mouse Monoclonal Antibody(2C6)
Host Species	Mouse
Clonality	Monoclonal
Clone No.	2C6
Isotype	IgG1
Applications	WB IHC
Species Reactivity	Hu Rt Ms
Specificity	GSK3 $\beta$ Mouse Monoclonal Antibody(2C6) detects endogenous levels of GSK3B
Immunogen Type	Peptide
Immunogen Description	Synthetic Peptide
Target Name	GSK3 $\beta$
Other Names	GSK3B
Accession No.	Swiss-Prot:P49841 Gene ID:2932
Uniprot	P49841
GeneID	2932;
Calculated MW	46kd
Concentration	1mg/ml
Formulation	Liquid in PBS containing 50% glycerol, 0.5% BSA and 0.02% sodium azide.
Storage	Store at -20°C/1 year

## Application Details

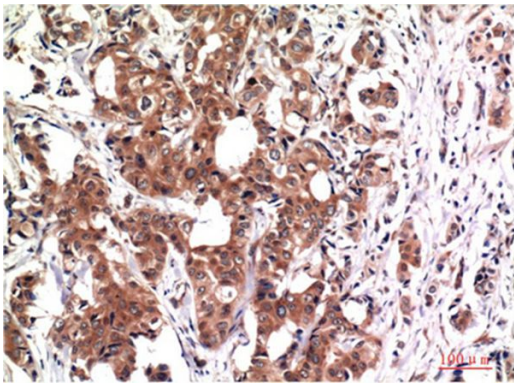
Western blotting: 1:1000-1:2000

Immunohistochemistry: 1:100-1:200

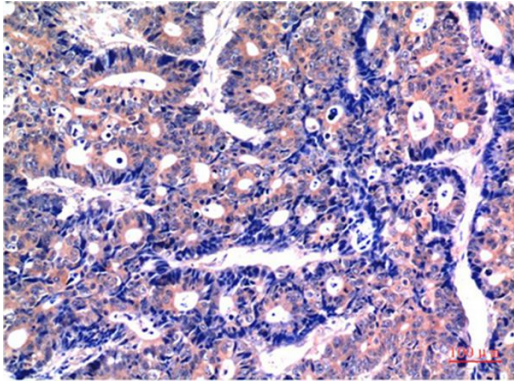
## Images



Western blot analysis of 1) HeLa Cell Lysate, 2) 3T3 Cell Lysate, 3) Rat Brain Tissue Lysate using GSK3 $\beta$  Mouse mAb diluted at 1:1000.



Immunohistochemical analysis of paraffin-embedded Human Breast Carcinoma Tissue using GSK3 $\beta$  Mouse mAb diluted at 1:200.



Immunohistochemical analysis of paraffin-embedded Human Stomach Carcinoma Tissue using GSK3 $\beta$  Mouse mAb diluted at 1:200.

---

Note: This product is for in vitro research use only