

LC3A Mouse Monoclonal Antibody(5G10)

Catalog No: #44176

Package Size: #44176-1 50ul #44176-2 100ul

Orders: order@signalwayantibody.com

Support: tech@signalwayantibody.com

Description

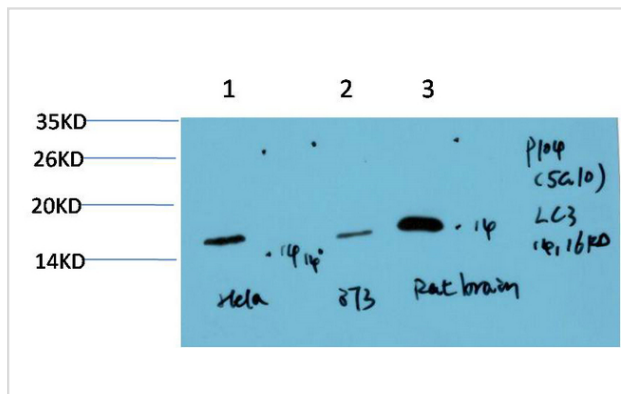
Product Name	LC3A Mouse Monoclonal Antibody(5G10)
Host Species	Mouse
Clonality	Monoclonal
Clone No.	5G10
Isotype	IgG1
Applications	WB IHC
Species Reactivity	Hu Rt Ms
Specificity	LC3A Mouse Monoclonal Antibody(5G10) detects endogenous levels of LC3A
Immunogen Type	Peptide
Immunogen Description	Synthetic Peptide
Target Name	LC3A
Other Names	LC3A
Accession No.	Swiss-Prot:Q9H492Gene ID:84557
Uniprot	Q9H492
GeneID	84557;
Calculated MW	14,16kd
Concentration	1mg/ml
Formulation	Liquid in PBS containing 50% glycerol, 0.5% BSA and 0.02% sodium azide.
Storage	Store at -20°C/1 year

Application Details

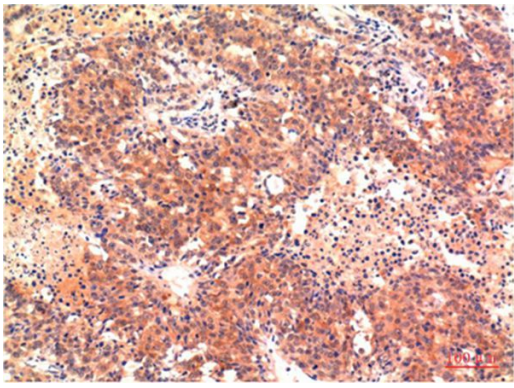
Western blotting: 1:1000-1:2000

Immunohistochemistry: 1:100-1:200

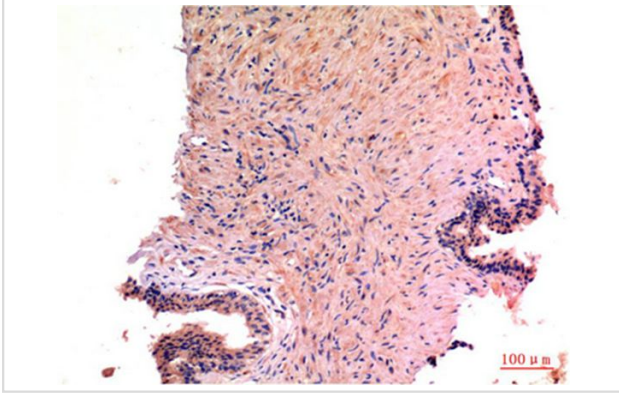
Images



Western blot analysis of 1) Hela Cell Lysate, 2) 3T3 Cell Lysate, 3) Rat Brain Tissue Lysate using LC3A Mouse mAb diluted at 1:1000.



Immunohistochemical analysis of paraffin-embedded Human Hepatocarcinoma Tissue using LC3A Mouse mAb diluted at 1:200.



Immunohistochemical analysis of paraffin-embedded Human Prostate Carcinoma Tissue using LC3A Mouse mAb diluted at 1:200.

Note: This product is for in vitro research use only