

## PTEN Mouse Monoclonal Antibody(9E8)

Catalog No: #44187

Package Size: #44187-1 50ul #44187-2 100ul

Orders: order@signalwayantibody.com

Support: tech@signalwayantibody.com

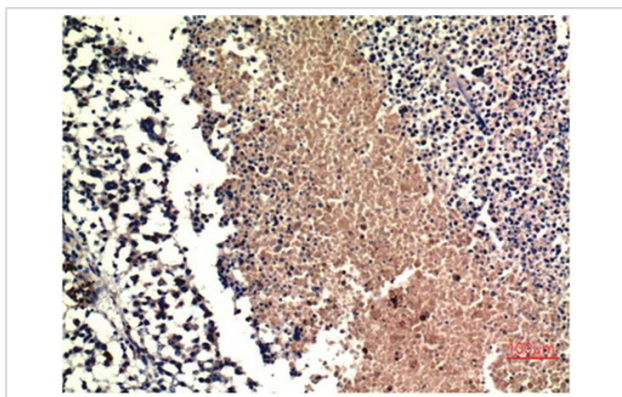
## Description

|                       |   |
|-----------------------|---|
| Product Name          | PTEN Mouse Monoclonal Antibody(9E8)                                     |
| Host Species          | Mouse   |
| Clonality             | Monoclonal  |
| Clone No.             | 9.00E+08  |
| Isotype               | IgG1  |
| Applications          | IHC   |
| Species Reactivity    | Hu  |
| Specificity           | PTEN Mouse Monoclonal Antibody(9E8) detects endogenous levels of PTEN   |
| Immunogen Type        | Peptide   |
| Immunogen Description | Synthetic Peptide   |
| Target Name           | PTEN  |
| Other Names           | PTEN  |
| Accession No.         | Swiss-Prot:P60484Gene ID:5728   |
| Uniprot               | P60484  |
| GeneID                | 5728;   |
| Calculated MW         | 54kd  |
| Concentration         | 1mg/ml  |
| Formulation           | Liquid in PBS containing 50% glycerol, 0.5% BSA and 0.02% sodium azide. |
| Storage               | Store at -20°C/1 year   |

## Application Details

Immunohistochemistry: 1:100-1:200

## Images



Immunohistochemical analysis of paraffin-embedded Human Lung Carcinoma Tissue using PTEN Mouse mAb diluted at 1:200.

---

Note: This product is for in vitro research use only