

CHOP Mouse Monoclonal Antibody(2B1)

Catalog No: #44195

Package Size: #44195-1 50ul #44195-2 100ul

Orders: order@signalwayantibody.com

Support: tech@signalwayantibody.com

Description

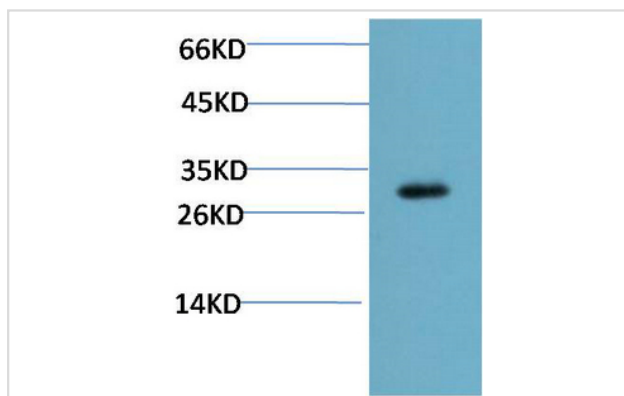
Product Name	CHOP Mouse Monoclonal Antibody(2B1)
Host Species	Mouse
Clonality	Monoclonal
Clone No.	2B1
Isotype	IgG1
Applications	WB IHC
Species Reactivity	Hu Rt Ms
Specificity	CHOP Mouse Monoclonal Antibody(2B1) detects endogenous levels of DDIT3
Immunogen Type	Peptide
Immunogen Description	Synthetic Peptide
Target Name	CHOP
Other Names	DDIT3
Accession No.	Swiss-Prot:P35638Gene ID:1649
Uniprot	P35638
GeneID	1649;
Calculated MW	27kd
Concentration	1mg/ml
Formulation	Liquid in PBS containing 50% glycerol, 0.5% BSA and 0.02% sodium azide.
Storage	Store at -20°C/1 year

Application Details

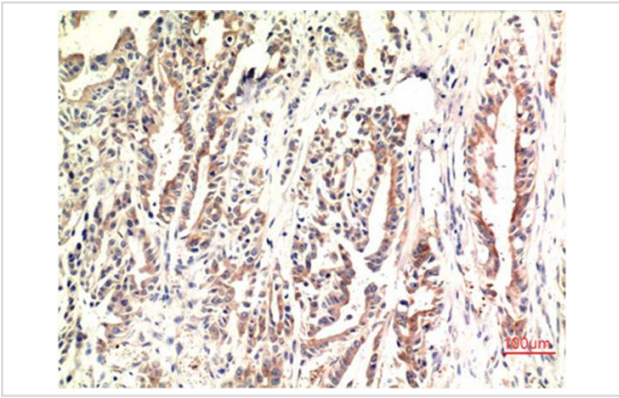
Western blotting: 1:1000-1:2000

Immunohistochemistry: 1:100-1:200

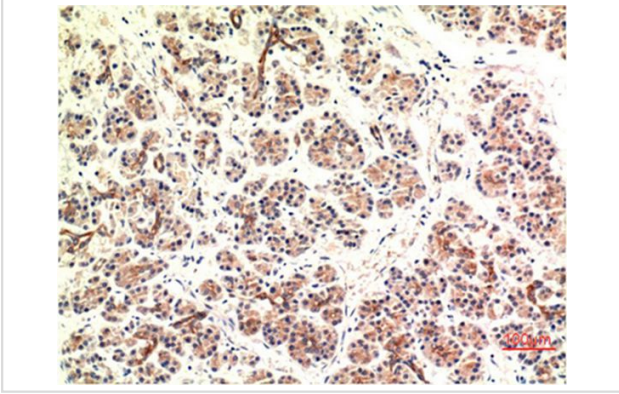
Images



Western blot analysis of Mouse Liver Tissue Lysate using CHOP Mouse mAb diluted at 1:2000.



Immunohistochemical analysis of paraffin-embedded Human Stomach Carcinoma Tissue using CHOP Mouse mAb diluted at 1:200.



Immunohistochemical analysis of paraffin-embedded Human Pancreas Carcinoma Tissue using CHOP Mouse mAb diluted at 1:200.

Note: This product is for in vitro research use only