

Tau Mouse Monoclonal Antibody(10E3)

Catalog No: #44199

Package Size: #44199-1 50ul #44199-2 100ul

Orders: order@signalwayantibody.com

Support: tech@signalwayantibody.com

Description

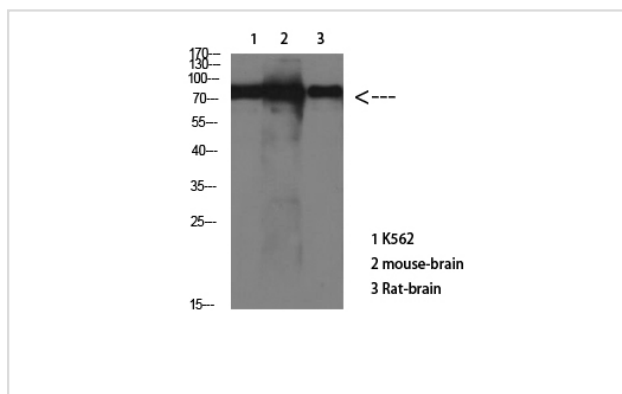
Product Name	Tau Mouse Monoclonal Antibody(10E3)
Host Species	Mouse
Clonality	Monoclonal
Clone No.	1.00E+04
Isotype	IgG1
Applications	WB IHC
Species Reactivity	Hu Rt Ms
Specificity	Tau Mouse Monoclonal Antibody(10E3) detects endogenous levels of MAPT
Immunogen Type	Peptide
Immunogen Description	Synthetic Peptide
Target Name	Tau
Other Names	MAPT
Accession No.	Swiss-Prot:P10636Gene ID:4137
Uniprot	P10636
GeneID	4137;
Calculated MW	79kd
Concentration	1mg/ml
Formulation	Liquid in PBS containing 50% glycerol, 0.5% BSA and 0.02% sodium azide.
Storage	Store at -20°C/1 year

Application Details

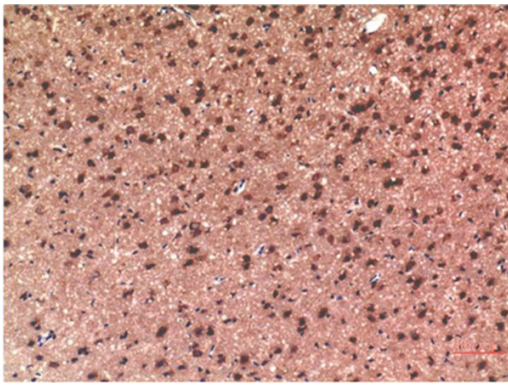
Western blotting: 1:1000-1:2000

Immunohistochemistry: 1:100-1:200

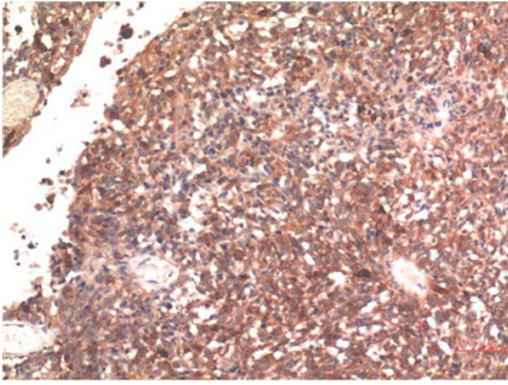
Images



Western Blot analysis of various cells using Antibody diluted at 1:1000



Immunohistochemical analysis of paraffin-embedded Rat Brain Tissue using Tau Mouse mAb diluted at 1:200



Immunohistochemical analysis of paraffin-embedded Human Brain Tissue using Tau Mouse mAb diluted at 1:200

Note: This product is for in vitro research use only