

ATM Mouse Monoclonal Antibody(1D1)

Catalog No: #44209

Package Size: #44209-1 50ul #44209-2 100ul

Orders: order@signalwayantibody.com

Support: tech@signalwayantibody.com

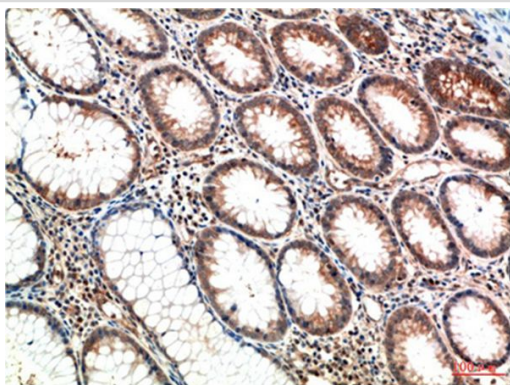
Description

Product Name	ATM Mouse Monoclonal Antibody(1D1)
Host Species	Mouse
Clonality	Monoclonal
Clone No.	1D1
Isotype	IgG1
Applications	IHC
Species Reactivity	Hu Rt Ms
Specificity	ATM Mouse Monoclonal Antibody(1D1) detects endogenous levels of ATM
Immunogen Type	Recombinant protein
Immunogen Description	Recombinant Protein
Target Name	ATM
Other Names	ATM
Accession No.	Swiss-Prot:Q13315Gene ID:472
Uniprot	Q13315
GeneID	472;
Calculated MW	350kd
Concentration	1mg/ml
Formulation	Liquid in PBS containing 50% glycerol, 0.5% BSA and 0.02% sodium azide.
Storage	Store at -20°C/1 year

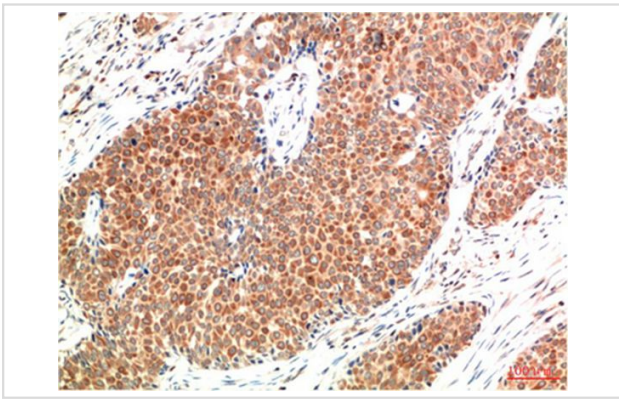
Application Details

Immunohistochemistry: 1:100-1:200

Images



Immunohistochemical analysis of paraffin-embedded Human Colon Carcinoma Tissue using ATM Mouse mAb diluted at 1:200.



Immunohistochemical analysis of paraffin-embedded Human Breast Carcinoma Tissue using ATM Mouse mAb diluted at 1:200.

Note: This product is for in vitro research use only