

Phospho-Smad3(S425) Mouse Monoclonal Antibody(1D9)

Catalog No: #12838

Orders: order@signalwayantibody.comSupport: tech@signalwayantibody.com

Package Size: #12838-1 50ul #12838-2 100ul

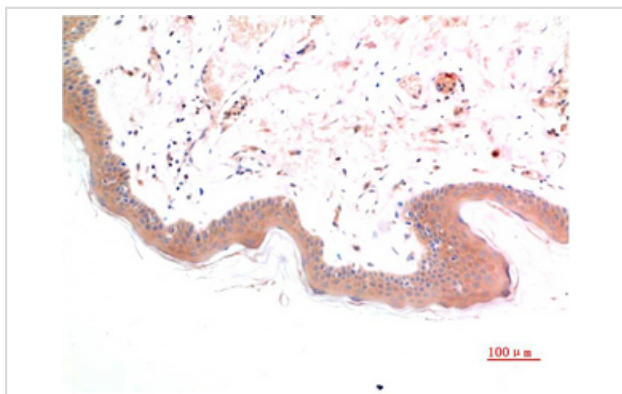
Description

| | |
|-----------------------|---|
| Product Name | Phospho-Smad3(S425) Mouse Monoclonal Antibody(1D9) |
| Host Species | Mouse |
| Clonality | Monoclonal |
| Clone No. | 1D9 |
| Isotype | IgG1 |
| Applications | IHC |
| Species Reactivity | Hu Ms Rt |
| Specificity | The antibody detects endogenous Phospho-Smad3(S425) protein |
| Immunogen Type | Peptide |
| Immunogen Description | Synthetic Peptide of Phospho-Smad3(S425) |
| Target Name | Smad3 |
| Modification | Phospho |
| Other Names | Mothers against decapentaplegic homolog 3 (MAD homolog 3) (Mad3) (Mothers against DPP homolog 3) (hMAD-3) (JV15-2) (SMAD family member 3) (SMAD 3) (Smad3) (hSMAD3) |
| Accession No. | Swiss-Prot:P84022Gene ID:4088 |
| Uniprot | P84022 |
| GeneID | 4088; |
| Calculated MW | 52kd |
| Concentration | 1mg/ml |
| Formulation | Liquid in PBS containing 50% glycerol, 0.5% BSA and 0.02% sodium azide. |
| Storage | Store at -20°C/1 year |

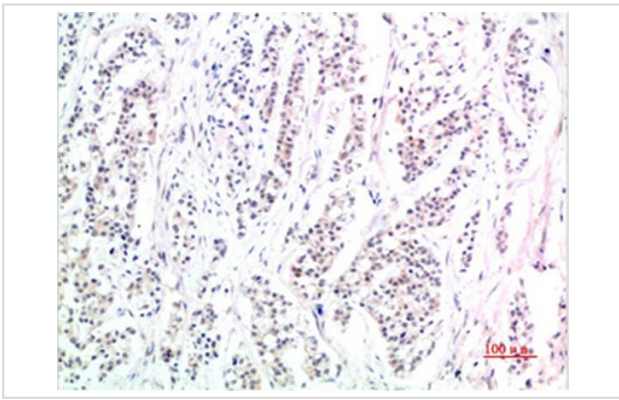
Application Details

Immunohistochemistry: 1:50-1:200

Images



Immunohistochemical analysis of paraffin-embedded Human Skin Tissue using Phospho-Smad3(S425)Mouse mAb diluted at 1:200



Immunohistochemical analysis of paraffin-embedded Human Stomach Carcinoma Tissue using Phospho-Smad3(S425) Mouse mAb diluted at 1:200

Note: This product is for in vitro research use only