

## P38 Mouse Monoclonal Antibody(8C11)

Catalog No: #44250

Package Size: #44250-1 50ul #44250-2 100ul

Orders: order@signalwayantibody.com

Support: tech@signalwayantibody.com

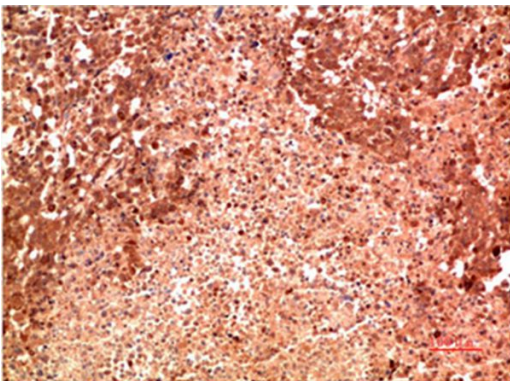
## Description

Product Name	P38 Mouse Monoclonal Antibody(8C11)
Host Species	Mouse
Clonality	Monoclonal
Clone No.	8C11
Isotype	IgG1
Applications	IHC
Species Reactivity	Hu Ms Rt
Specificity	The antibody detects endogenous P38 protein
Immunogen Type	Peptide
Immunogen Description	Synthetic Peptide of P38
Target Name	P38
Other Names	Mitogen-activated protein kinase 14 (MAP kinase 14) (MAPK 14) (EC 2.7.11.24) (Cytokine suppressive anti-inflammatory drug-binding protein) (CSAID-binding protein) (CSBP) (MAP kinase MXI2) (MAX-interacting protein 2) (Mitogen-activated protein kinase p38 alpha) (MAP kinase p38 alpha) (Stress-activate
Accession No.	Swiss-Prot:Q16539Gene ID:1432
Uniprot	Q16539
GeneID	1432;
Calculated MW	42kd
Concentration	1mg/ml
Formulation	Liquid in PBS containing 50% glycerol, 0.5% BSA and 0.02% sodium azide.
Storage	Store at -20°C/1 year

## Application Details

Immunohistochemistry: 1:50-1:200

## Images



Immunohistochemical analysis of paraffin-embedded Human Lung Carcinoma Tissue using P38 Mouse mAb diluted at 1:200

---

Note: This product is for in vitro research use only