

HP-1 $\alpha$  Mouse Monoclonal Antibody(2G2)

Catalog No: #44279

Package Size: #44279-1 50ul #44279-2 100ul

Orders: [order@signalwayantibody.com](mailto:order@signalwayantibody.com)Support: [tech@signalwayantibody.com](mailto:tech@signalwayantibody.com)

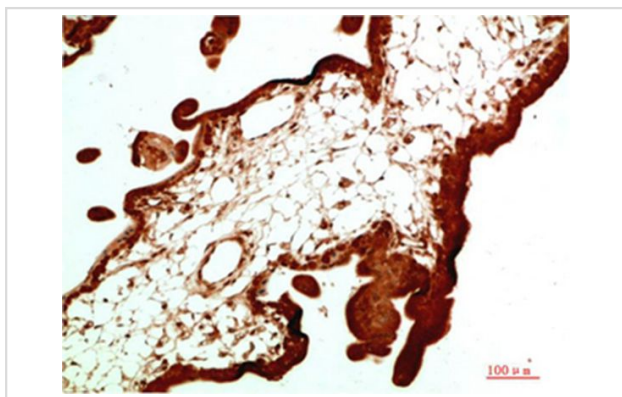
## Description

Product Name	HP-1 $\alpha$ Mouse Monoclonal Antibody(2G2)
Host Species	Mouse
Clonality	Monoclonal
Clone No.	2G2
Isotype	IgG1
Applications	IHC
Species Reactivity	Hu Ms Rt
Specificity	The antibody detects endogenous HP-1 $\alpha$ protein
Immunogen Type	Recombinant protein
Immunogen Description	Recombinant Protein of HP-1 $\alpha$
Target Name	HP-1 $\alpha$
Other Names	Chromobox protein homolog 5 (Antigen p25) (Heterochromatin protein 1 homolog alpha) (HP1 alpha)
Accession No.	Swiss-Prot:P45973Gene ID:23468
Uniprot	P45973
GeneID	23468;
Calculated MW	22kd
Concentration	1mg/ml
Formulation	Liquid in PBS containing 50% glycerol, 0.5% BSA and 0.02% sodium azide.
Storage	Store at -20°C/1 year

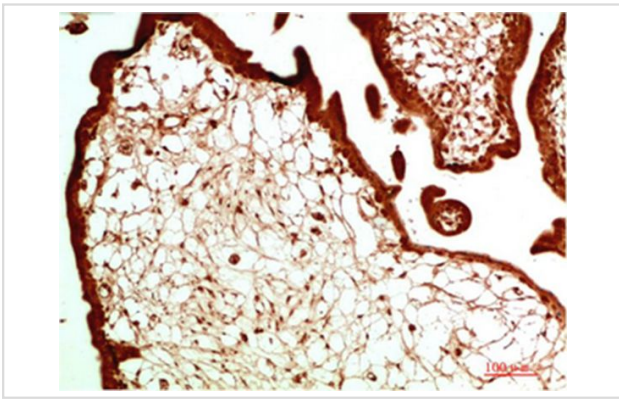
## Application Details

Immunohistochemistry: 1:50-1:2000

## Images



Immunohistochemical analysis of paraffin-embedded Human Placenta Tissue using HP-1 $\alpha$  Mouse mAb diluted at 1:500



Immunohistochemical analysis of paraffin-embedded Human Placenta Tissue using HP-1 $\alpha$  Mouse mAb diluted at 1:500

---

Note: This product is for in vitro research use only