

CTIP (Phospho-Ser327) Antibody

Catalog No: #12402

Package Size: #12402-1 50ul #12402-2 100ul

Orders: order@signalwayantibody.comSupport: tech@signalwayantibody.com

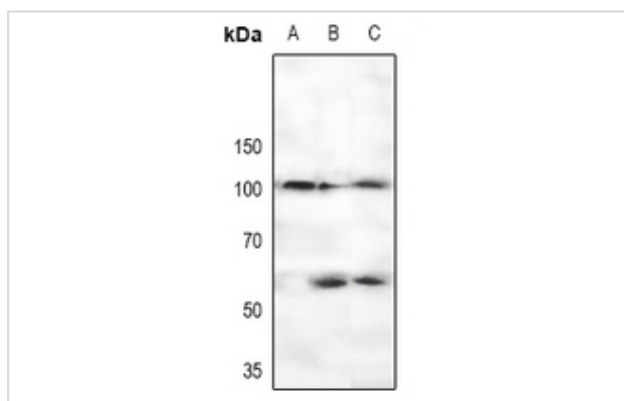
Description

Product Name	CTIP (Phospho-Ser327) Antibody
Host Species	Rabbit
Clonality	Polyclonal
Purification	Antibodies were produced by immunizing rabbits with synthetic phosphopeptide and KLH conjugates. Antibodies were purified by affinity-chromatography using epitope-specific phosphopeptide. Non-phospho specific antibodies were removed by chromatography using non-phosphopeptide.
Applications	WB
Species Reactivity	Hu Ms
Specificity	CTIP (Phospho-Ser327) Antibody detects endogenous levels of CTIP only when phosphorylated at Ser327
Immunogen Type	Peptide
Immunogen Description	A synthesized peptide derived from human CTIP (Phospho-Ser327)
Target Name	CTIP
Modification	Phospho
Other Names	RBBP8, CTIP, DNA endonuclease RBBP8, RIM, SAE2, COM1, CtBP-interacting protein, JWDS, RBBP-8, SCKL2, Seckel syndrome 2
Accession No.	Swiss-Prot#: Q99708NCBI Gene ID: 5932
Uniprot	Q99708
GeneID	5932;
Target Species	human
Calculated MW	102kd
Concentration	1.0mg/ml
Formulation	Liquid in 0.42% Potassium phosphate, 0.87% Sodium chloride, pH 7.3, 30% glycerol, and 0.01% sodium azide.
Storage	Store at -20°C

Application Details

WB (1/500 - 1/1000)

Images



Western blot analysis of CTIP (pS327) expression in U87 (A), PC3 (B), MCF7 (C) whole cell lysates.

Note: This product is for in vitro research use only