

PKA $\alpha$  CAT (Phospho-Ser338) Antibody

Catalog No: #12410



Package Size: #12410-1 50ul #12410-2 100ul

Orders: [order@signalwayantibody.com](mailto:order@signalwayantibody.com)Support: [tech@signalwayantibody.com](mailto:tech@signalwayantibody.com)

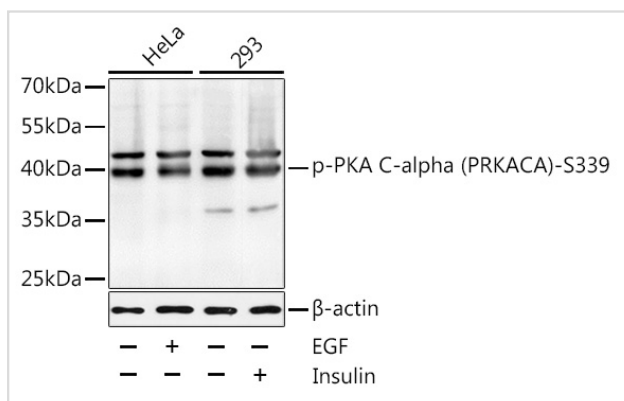
## Description

Product Name	PKA $\alpha$ CAT (Phospho-Ser338) Antibody
Host Species	Rabbit
Clonality	Polyclonal
Purification	Antibodies were produced by immunizing rabbits with synthetic phosphopeptide and KLH conjugates. Antibodies were purified by affinity-chromatography using epitope-specific phosphopeptide. Non-phospho specific antibodies were removed by chromatography using non-phosphopeptide.
Applications	WB
Species Reactivity	Hu Ms Rt
Specificity	PKA $\alpha$ CAT (Phospho-Ser338) Antibody detects endogenous levels of PKA $\alpha$ CAT only when phosphorylated at Ser338
Immunogen Type	Peptide
Immunogen Description	A synthesized peptide derived from human PKA $\alpha$ CAT (Phospho-Ser338)
Target Name	PKA $\alpha$ CAT
Modification	Phospho
Other Names	PRKACA, PKA C-alpha, Pka calpha, PKACA
Accession No.	Swiss-Prot#: P17612NCBI Gene ID: 5566
Uniprot	P17612
GeneID	5566;
Target Species	human
Calculated MW	36kd
Concentration	1.0mg/ml
Formulation	Rabbit IgG in phosphate buffered saline (without Mg <sup>2+</sup> and Ca <sup>2+</sup> ), pH 7.4, 150mM NaCl, 0.02% sodium azide and 50% glycerol.
Storage	Store at -20°C

## Application Details

Western blotting: 1:1000

## Images



Western blot analysis of extracts of HeLa and 293 cells, using PKA $\alpha$  CAT (Phospho-Ser338) Antibody at 1:1000 dilution. HeLa cells were treated by EGF (100ng/mL) for 30 minutes after serum-starvation overnight. 293T cells were treated by Insulin (100nM) for 10 minutes after serumstarvation overnight. Secondary antibody: HRP Goat Anti-Rabbit IgG (H+L) at 1:10000 dilution. Lysates/proteins: 25ug per lane. Blocking buffer: 3% BSA.

Note: This product is for in vitro research use only