

PKC  $\beta$  (Phospho-Ser660) Antibody

Catalog No: #12418

Package Size: #12418-1 50ul #12418-2 100ul

Orders: order@signalwayantibody.com

Support: tech@signalwayantibody.com

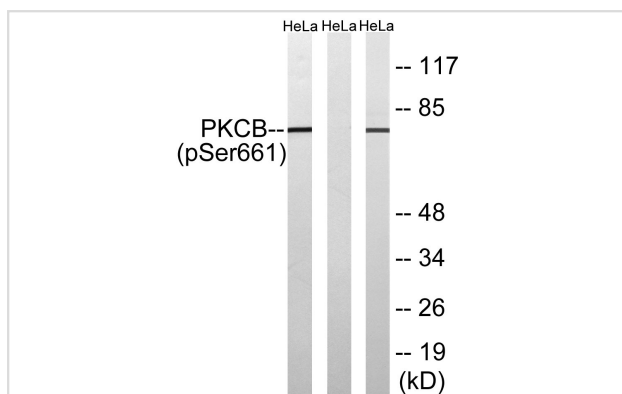
## Description

Product Name	PKC $\beta$ (Phospho-Ser660) Antibody
Host Species	Rabbit
Clonality	Polyclonal
Purification	Antibodies were produced by immunizing rabbits with synthetic phosphopeptide and KLH conjugates. Antibodies were purified by affinity-chromatography using epitope-specific phosphopeptide. Non-phospho specific antibodies were removed by chromatography using non-phosphopeptide.
Applications	WB
Species Reactivity	Ms
Specificity	PKC $\beta$ (Phospho-Ser660) Antibody detects endogenous levels of PKC $\beta$ only when phosphorylated at Ser660
Immunogen Type	Peptide
Immunogen Description	A synthesized peptide derived from human PKC $\beta$ (Phospho-Ser660)
Target Name	PKC $\beta$
Modification	Phospho
Other Names	PKC $\beta$ (Phospho-Ser660) Antibody
Accession No.	Swiss-Prot#: P68404(P05771)NCBI Gene ID: 18751
Uniprot	P68404
GeneID	18751;
Target Species	human
Calculated MW	76kd
Concentration	1.0mg/ml
Formulation	Liquid in PBS containing 50% glycerol, 0.5% BSA and 0.02% sodium azide.
Storage	Store at -20°C

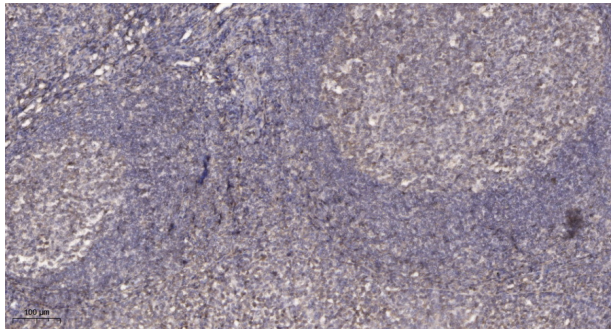
## Application Details

Western blotting: 1:1000

## Images



Western blot analysis of lysates from HeLa cells treated with heat shock, using PKCB (Phospho-Ser661) Antibody. The lane on the right is blocked with the phospho peptide.



Immunohistochemical analysis of paraffin-embedded human tonsil. 1, Antibody was diluted at 1:200(4° overnight). 2, Tris-EDTA,pH9.0 was used for antigen retrieval. 3,Secondary antibody was diluted at 1:200(room temperature, 45min).

---

Note: This product is for in vitro research use only