

## CD150 (Phospho-Tyr327) Antibody

Catalog No: #12424

Package Size: #12424-1 50ul #12424-2 100ul

Orders: [order@signalwayantibody.com](mailto:order@signalwayantibody.com)Support: [tech@signalwayantibody.com](mailto:tech@signalwayantibody.com)

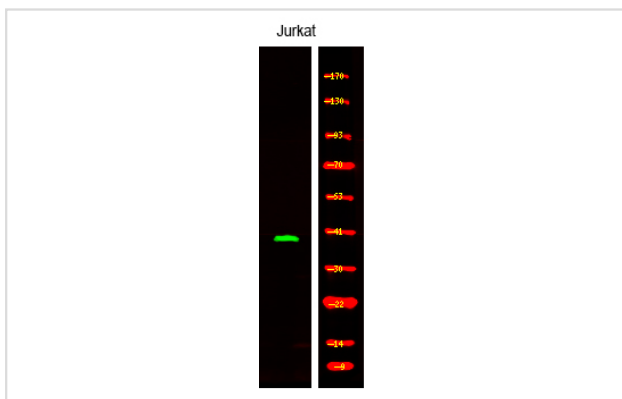
## Description

Product Name	CD150 (Phospho-Tyr327) Antibody
Host Species	Rabbit
Clonality	Polyclonal
Purification	Antibodies were produced by immunizing rabbits with synthetic phosphopeptide and KLH conjugates. Antibodies were purified by affinity-chromatography using epitope-specific phosphopeptide. Non-phospho specific antibodies were removed by chromatography using non-phosphopeptide.
Applications	WB
Species Reactivity	Hu Ms
Specificity	CD150 (Phospho-Tyr327) Antibody detects endogenous levels of CD150 only when phosphorylated at Tyr327
Immunogen Type	Peptide
Immunogen Description	A synthesized peptide derived from human CD150 (Phospho-Tyr327)
Target Name	CD150
Modification	Phospho
Other Names	SLAMF1, CD150 antigen, CD150, IPO-3, SLAM, CDw150
Accession No.	Swiss-Prot#: Q13291NCBI Gene ID: 6504
Uniprot	Q13291
GeneID	6504;
Target Species	human
Calculated MW	70kd
Concentration	1.0mg/ml
Formulation	Rabbit IgG in phosphate buffered saline (without Mg <sup>2+</sup> and Ca <sup>2+</sup> ), pH 7.4, 150mM NaCl, 0.02% sodium azide and 50% glycerol.
Storage	Store at -20°C

## Application Details

Western blotting: 1:1000

## Images



Western Blot analysis of lysates of Jurkat, using primary antibody at 1:1000 dilution.

---

Note: This product is for in vitro research use only