

c-Fes (Phospho-Tyr713) Antibody

Catalog No: #12426

Package Size: #12426-1 50ul #12426-2 100ul

Orders: order@signalwayantibody.comSupport: tech@signalwayantibody.com

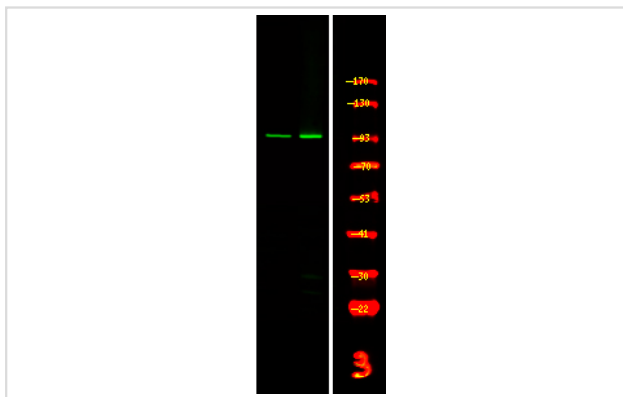
Description

Product Name	c-Fes (Phospho-Tyr713) Antibody
Host Species	Rabbit
Clonality	Polyclonal
Purification	Antibodies were produced by immunizing rabbits with synthetic phosphopeptide and KLH conjugates. Antibodies were purified by affinity-chromatography using epitope-specific phosphopeptide. Non-phospho specific antibodies were removed by chromatography using non-phosphopeptide.
Applications	WB
Species Reactivity	Hu
Specificity	c-Fes (Phospho-Tyr713) Antibody detects endogenous levels of c-Fes only when phosphorylated at Tyr713
Immunogen Type	Peptide
Immunogen Description	A synthesized peptide derived from human c-Fes (Phospho-Tyr713)
Target Name	c-Fes
Modification	Phospho
Other Names	FES, c-fes, FPS, Feline sarcoma oncogene, Proto-oncogene c-Fps, v-fps, p93c-fes, Proto-oncogene c-Fes, v-fes, v-fes feline sarcoma viral
Accession No.	Swiss-Prot#: P07332NCBI Gene ID: 2242
Uniprot	P07332
GeneID	2242;
Target Species	human
Calculated MW	93kd.
Concentration	1.0mg/ml
Formulation	Rabbit IgG in phosphate buffered saline (without Mg ²⁺ and Ca ²⁺), pH 7.4, 150mM NaCl, 0.02% sodium azide and 50% glycerol.
Storage	Store at -20°C

Application Details

Western blotting: 1:1000

Images



Western Blot analysis of lysates of 1. HepG2 cell and 2. HepG2 cell treated with 100ng/mL LPS for 30min, using primary antibody at 1:1000 dilution.

Note: This product is for in vitro research use only