

## Smad1 (Phospho-Ser214) Antibody

Catalog No: #12436



Package Size: #12436-1 50ul #12436-2 100ul

Orders: [order@signalwayantibody.com](mailto:order@signalwayantibody.com)Support: [tech@signalwayantibody.com](mailto:tech@signalwayantibody.com)

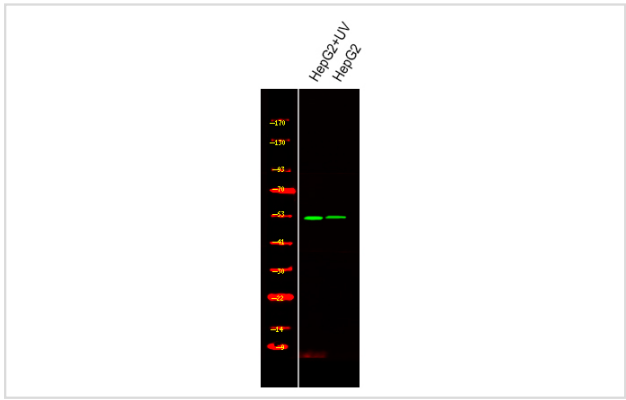
## Description

Product Name	Smad1 (Phospho-Ser214) Antibody
Host Species	Rabbit
Clonality	Polyclonal
Purification	Antibodies were produced by immunizing rabbits with synthetic phosphopeptide and KLH conjugates. Antibodies were purified by affinity-chromatography using epitope-specific phosphopeptide. Non-phospho specific antibodies were removed by chromatography using non-phosphopeptide.
Applications	WB
Species Reactivity	Hu Ms Rt
Specificity	Smad1 (Phospho-Ser214) Antibody detects endogenous levels of Smad1 only when phosphorylated at Ser214
Immunogen Type	Peptide
Immunogen Description	A synthesized peptide derived from human Smad1 (Phospho-Ser214)
Target Name	Smad1
Modification	Phospho
Other Names	SMAD1, BSP1, BSP-1, JV4-1, MADH1, Mothers against DPP homolog 1, JV41, SMAD family member 1, TGF-beta signaling protein 1, MADR1, HSMAD1, MAD homolog 1, Mad-related protein 1, SMAD 1
Accession No.	Swiss-Prot#: Q15797NCBI Gene ID: 4086
Uniprot	Q15797
GeneID	4086;
Target Species	human
Calculated MW	60kd
Concentration	1.0mg/ml
Formulation	Rabbit IgG in phosphate buffered saline (without Mg <sup>2+</sup> and Ca <sup>2+</sup> ), pH 7.4, 150mM NaCl, 0.02% sodium azide and 50% glycerol.
Storage	Store at -20°C

## Application Details

Western blotting: 1:1000

## Images



Western Blot analysis of lysates of HepG2 cell UV treated and HepG2 cell, using primary antibody at 1:1000 dilution.

Note: This product is for in vitro research use only