

Gz- α (Phospho-Ser16) Antibody

Catalog No: #12439

Package Size: #12439-1 50ul #12439-2 100ul

Orders: order@signalwayantibody.comSupport: tech@signalwayantibody.com

Description

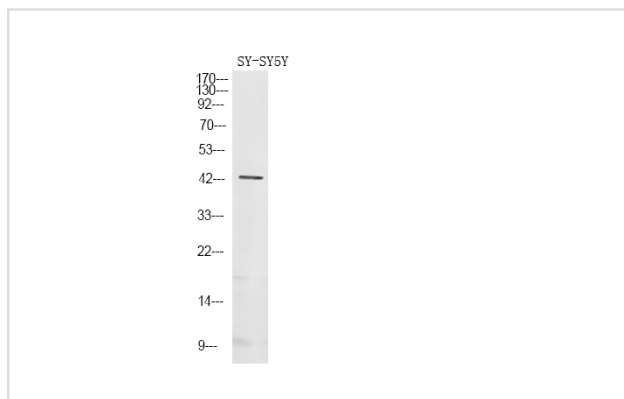
| | |
|-----------------------|---|
| Product Name | Gz- α (Phospho-Ser16) Antibody |
| Host Species | Rabbit |
| Clonality | Polyclonal |
| Purification | Antibodies were produced by immunizing rabbits with synthetic phosphopeptide and KLH conjugates. Antibodies were purified by affinity-chromatography using epitope-specific phosphopeptide. Non-phospho specific antibodies were removed by chromatography using non-phosphopeptide. |
| Applications | WB |
| Species Reactivity | Hu Ms Rt |
| Specificity | Gz- α (Phospho-Ser16) Antibody detects endogenous levels of Gz- α only when phosphorylated at Ser16 |
| Immunogen Type | Peptide |
| Immunogen Description | A synthesized peptide derived from human Gz- α (Phospho-Ser16) |
| Target Name | Gz- α |
| Modification | Phospho |
| Other Names | GNAZ, G(x) alpha chain, Transducin alpha, Gz-alpha |
| Accession No. | Swiss-Prot#: P19086NCBI Gene ID: 2781 |
| Uniprot | P19086 |
| GeneID | 2781; |
| Target Species | human |
| Calculated MW | 41kd |
| Concentration | 1.0mg/ml |
| Formulation | Rabbit IgG in phosphate buffered saline (without Mg ²⁺ and Ca ²⁺), pH 7.4, 150mM NaCl, 0.02% sodium azide and 50% glycerol. |
| Storage | Store at -20°C |

Application Details

Western blotting: 1:1000

Images

Western Blot analysis of lysates of SY-SY5Y cell, using primary antibody at 1:1000 dilution.



Note: This product is for in vitro research use only