

eNOS (Phospho-Ser1179) Antibody

Catalog No: #12454



Package Size: #12454-1 50ul #12454-2 100ul

Orders: order@signalwayantibody.comSupport: tech@signalwayantibody.com

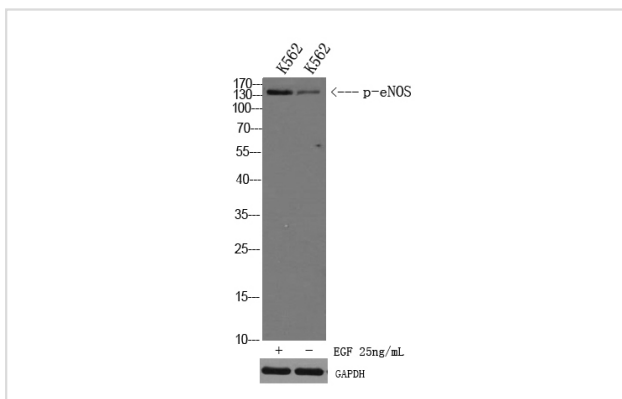
Description

Product Name	eNOS (Phospho-Ser1179) Antibody
Host Species	Rabbit
Clonality	Polyclonal
Purification	Antibodies were produced by immunizing rabbits with synthetic phosphopeptide and KLH conjugates. Antibodies were purified by affinity-chromatography using epitope-specific phosphopeptide. Non-phospho specific antibodies were removed by chromatography using non-phosphopeptide.
Applications	WB
Species Reactivity	Hu Ms Rt
Specificity	eNOS (Phospho-Ser1179) Antibody detects endogenous levels of eNOS only when phosphorylated at Ser1179
Immunogen Type	Peptide
Immunogen Description	A synthesized peptide derived from human eNOS (Phospho-Ser1179)
Target Name	eNOS
Modification	Phospho
Other Names	NOS3, Constitutive NOS, CNOS, Endothelial NOS, ECNOS, NOS type III, NOSIII, EC-NOS, ENOS, Nitric oxide synthase 3
Accession No.	Swiss-Prot#: P29474 NCBI Gene ID: 4846
Uniprot	P29474
GeneID	4846;
Target Species	human
Calculated MW	140kd
Concentration	1.0mg/ml
Formulation	Rabbit IgG in phosphate buffered saline (without Mg ²⁺ and Ca ²⁺), pH 7.4, 150mM NaCl, 0.02% sodium azide and 50% glycerol.
Storage	Store at -20°C

Application Details

Western blotting: 1:1000

Images



Western Blot analysis of K562 cells, cell treated or untreated by EGF 20ng/ml 30'. Primary Antibody was diluted at 1:1000. Secondary antibody(catalog#:RS23920 was diluted at 1:10000

Note: This product is for in vitro research use only