

TOP2A (Phospho-Ser1213) Antibody

Catalog No: #12458



Package Size: #12458-1 50ul #12458-2 100ul

Orders: order@signalwayantibody.comSupport: tech@signalwayantibody.com

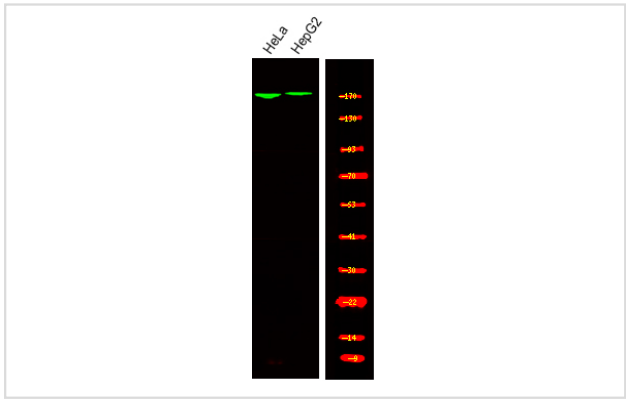
Description

Product Name	TOP2A (Phospho-Ser1213) Antibody
Host Species	Rabbit
Clonality	Polyclonal
Purification	Antibodies were produced by immunizing rabbits with synthetic phosphopeptide and KLH conjugates. Antibodies were purified by affinity-chromatography using epitope-specific phosphopeptide. Non-phospho specific antibodies were removed by chromatography using non-phosphopeptide.
Applications	WB
Species Reactivity	Hu Ms
Specificity	TOP2A (Phospho-Ser1213) Antibody detects endogenous levels of TOP2A only when phosphorylated at Ser1213
Immunogen Type	Peptide
Immunogen Description	A synthesized peptide derived from human TOP2A (Phospho-Ser1213)
Target Name	TOP2A
Modification	Phospho
Other Names	TOP2A, DNA topoisomerase II, 170 kD, TOP2, DNA gyrase, DNA topoisomerase 2-alpha, TP2A
Accession No.	Swiss-Prot#: P11388NCBI Gene ID: 7153
Uniprot	P11388
GeneID	7153;
Target Species	human
Calculated MW	174kd
Concentration	1.0mg/ml
Formulation	Rabbit IgG in phosphate buffered saline (without Mg2+ and Ca2+), pH 7.4, 150mM NaCl, 0.02% sodium azide and 50% glycerol.
Storage	Store at -20°C

Application Details

Western blotting: 1:1000

Images



Western Blot analysis of lysates of HeLa and HepG2, using primary antibody at 1:1000 dilution.

Note: This product is for in vitro research use only