

Kinesin-like Protein KIF1C (Phospho-Ser1092) Antibody

Catalog No: #12459

Orders: order@signalwayantibody.comSupport: tech@signalwayantibody.com

Package Size: #12459-1 50ul #12459-2 100ul

Description

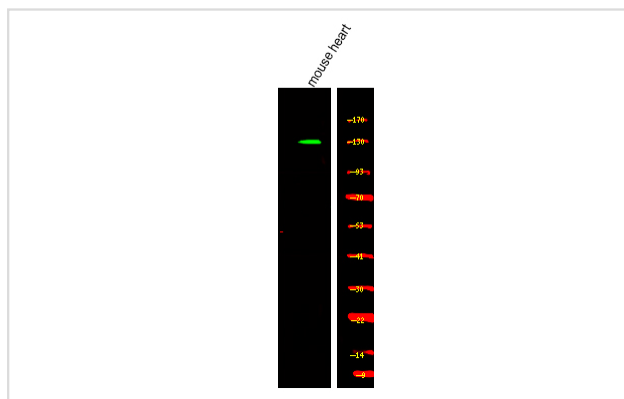
Product Name	Kinesin-like Protein KIF1C (Phospho-Ser1092) Antibody
Host Species	Rabbit
Clonality	Polyclonal
Purification	Antibodies were produced by immunizing rabbits with synthetic phosphopeptide and KLH conjugates. Antibodies were purified by affinity-chromatography using epitope-specific phosphopeptide. Non-phospho specific antibodies were removed by chromatography using non-phosphopeptide.
Applications	WB
Species Reactivity	Hu Ms Rt
Specificity	Kinesin-like Protein KIF1C (Phospho-Ser1092) Antibody detects endogenous levels of Kinesin-like Protein KIF1C only when phosphorylated at Ser1092
Immunogen Type	Peptide
Immunogen Description	A synthesized peptide derived from human Kinesin-like Protein KIF1C (Phospho-Ser1092)
Target Name	Kinesin-like Protein KIF1C
Modification	Phospho
Other Names	KIF1C, Kinesin-like protein KIF1C, Kinesin family member 1C, LTXS1, KIAA0706
Accession No.	Swiss-Prot#: O43896NCBI Gene ID: 10749
Uniprot	O43896
GenelD	10749;
Target Species	human
Calculated MW	122kd
Concentration	1.0mg/ml
Formulation	Liquid in PBS containing 50% glycerol, 0.5% BSA and 0.02% sodium azide.
Storage	Store at -20°C

Application Details

Western blotting: 1:1000

Images

Western Blot analysis of lysates of mouse heart, using primary antibody at 1:1000 dilution.



Note: This product is for in vitro research use only