

RBBP8 (Phospho-Ser664) Antibody

Catalog No: #12461



Package Size: #12461-1 50ul #12461-2 100ul

Orders: order@signalwayantibody.comSupport: tech@signalwayantibody.com

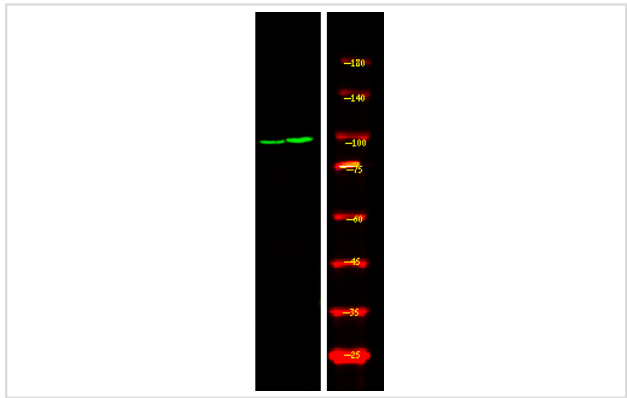
Description

Product Name	RBBP8 (Phospho-Ser664) Antibody
Host Species	Rabbit
Clonality	Polyclonal
Purification	Antibodies were produced by immunizing rabbits with synthetic phosphopeptide and KLH conjugates. Antibodies were purified by affinity-chromatography using epitope-specific phosphopeptide. Non-phospho specific antibodies were removed by chromatography using non-phosphopeptide.
Applications	WB
Species Reactivity	Hu Ms
Specificity	RBBP8 (Phospho-Ser664) Antibody detects endogenous levels of RBBP8 only when phosphorylated at Ser664
Immunogen Type	Peptide
Immunogen Description	A synthesized peptide derived from human RBBP8 (Phospho-Ser664)
Target Name	RBBP8
Modification	Phospho
Other Names	RBBP8, CTIP, DNA endonuclease RBBP8, RIM, SAE2, COM1, CtBP-interacting protein, JWDS, RBBP-8, SCKL2, Seckel syndrome 2
Accession No.	Swiss-Prot#: Q99708NCBI Gene ID: 5932
Uniprot	Q99708
GeneID	5932;
Target Species	human
Calculated MW	102kd
Concentration	1.0mg/ml
Formulation	Rabbit IgG in phosphate buffered saline (without Mg ²⁺ and Ca ²⁺), pH 7.4, 150mM NaCl, 0.02% sodium azide and 50% glycerol.
Storage	Store at -20°C

Application Details

Western blotting: 1:1000

Images



Western Blot analysis of lysates of HepG2 cell (Left) and HepG2 cell Serum-free treated (Right), using primary antibody at 1:1000 dilution.

Note: This product is for in vitro research use only