

## Alpha Smooth Muscle Actin antibody

Catalog No: #22956

Orders: [order@signalwayantibody.com](mailto:order@signalwayantibody.com)Support: [tech@signalwayantibody.com](mailto:tech@signalwayantibody.com)

## Description

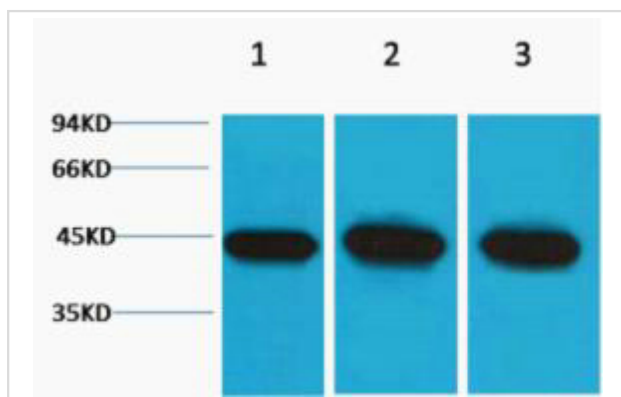
Product Name	Alpha Smooth Muscle Actin antibody
Host Species	Rabbit
Clonality	Polyclonal
Purification	Purified by antigen-affinity chromatography.
Applications	WB
Species Reactivity	Hu Ms Rt
Immunogen Description	A synthesized peptide derived from human Alpha Smooth Muscle Actin
Target Name	Alpha Smooth Muscle Actin
Accession No.	NCBI Gene ID: 59NCBI mRNA#: NM_001613NCBI Protein#: NP_001604
Uniprot	P62736
GeneID	59;
Concentration	1mg/ml
Formulation	PBS, pH 7.4, containing 0.02% sodium azide as Preservative and 50% Glycerol.
Storage	Store at -20°C for long term preservation (recommended). Store at 4°C for short term use.

## Application Details

Predicted MW: 42kd

Western blotting: 1:2000-1:3000

## Images



Western blot analysis of 1) HeLa, 2) 3T3, 3) Rat Kidney tissue, diluted at 1:5000

## Background

The protein encoded by this gene belongs to the actin family of proteins, which are highly conserved proteins that play a role in cell motility, structure and integrity. Alpha, beta and gamma actin isoforms have been identified, with alpha actins being a major constituent of the contractile apparatus, while beta and gamma actins are involved in the regulation of cell motility. This actin is an alpha actin that is found in skeletal muscle. Defects in this gene cause aortic aneurysm familial thoracic type 6. Multiple alternatively spliced variants, encoding the same protein, have been identified. [provided by RefSeq]

---

Note: This product is for in vitro research use only