

Caspase 8 (Phospho-Tyr448) Antibody

Catalog No: #12467

Package Size: #12467-1 50ul #12467-2 100ul

Orders: order@signalwayantibody.comSupport: tech@signalwayantibody.com

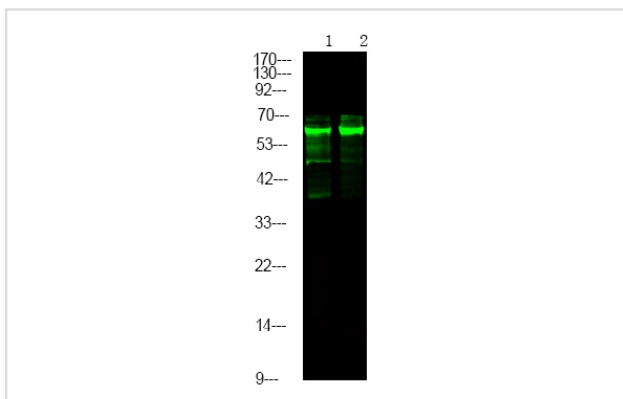
Description

Product Name	Caspase 8 (Phospho-Tyr448) Antibody
Host Species	Rabbit
Clonality	Polyclonal
Purification	Antibodies were produced by immunizing rabbits with synthetic phosphopeptide and KLH conjugates. Antibodies were purified by affinity-chromatography using epitope-specific phosphopeptide. Non-phospho specific antibodies were removed by chromatography using non-phosphopeptide.
Applications	WB
Species Reactivity	Hu
Specificity	Caspase 8 (Phospho-Tyr448) Antibody detects endogenous levels of Caspase 8 only when phosphorylated at Tyr448
Immunogen Type	Peptide
Immunogen Description	A synthesized peptide derived from human Caspase 8 (Phospho-Tyr448)
Target Name	Caspase 8
Modification	Phospho
Other Names	CASP8, ALPS2B, Apoptotic protease Mch-5, Apoptotic cysteine protease, Casp-8, Caspase-8, CAP4, Caspase 8, MACH, MCH5, MORT1-associated ced-3 homolog, ICE-like apoptotic protease 5, Pro Caspase 8, FADD-like ICE, FLICE, MACH-alpha-1/2/3 protein, MACH-b ...
Accession No.	Swiss-Prot#: Q14790NCBI Gene ID: 841
Uniprot	Q14790
GeneID	841;
Target Species	human
Calculated MW	57kd
Concentration	1.0mg/ml
Formulation	Liquid in PBS containing 50% glycerol, and 0.02% sodium azide.
Storage	Store at -20°C

Application Details

Western blotting: 1:1000

Images



Western Blot analysis of lysates of 1. Raji cell and 2. Raji cell Serum-free treated, using primary antibody at 1:1000 dilution.

Note: This product is for in vitro research use only