

## CREB (Phospho-Ser111) Antibody

Catalog No: #12471

Package Size: #12471-1 50ul #12471-2 100ul

Orders: [order@signalwayantibody.com](mailto:order@signalwayantibody.com)Support: [tech@signalwayantibody.com](mailto:tech@signalwayantibody.com)

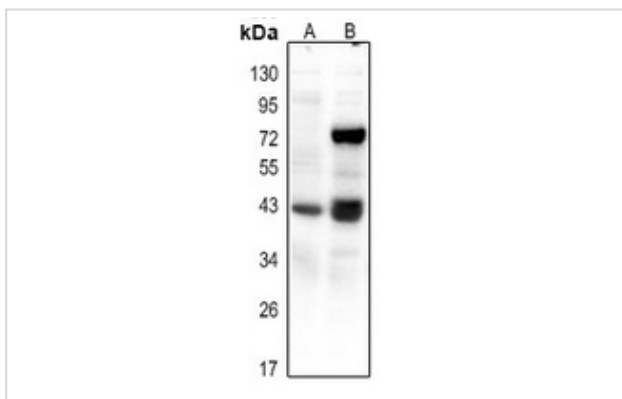
## Description

Product Name	CREB (Phospho-Ser111) Antibody
Host Species	Rabbit
Clonality	Polyclonal
Purification	Antibodies were produced by immunizing rabbits with synthetic phosphopeptide and KLH conjugates. Antibodies were purified by affinity-chromatography using epitope-specific phosphopeptide. Non-phospho specific antibodies were removed by chromatography using non-phosphopeptide.
Applications	WB
Species Reactivity	Hu Ms Rt
Specificity	CREB (Phospho-Ser111) Antibody detects endogenous levels of CREB only when phosphorylated at Ser111
Immunogen Type	Peptide
Immunogen Description	A synthesized peptide derived from human CREB (Phospho-Ser111)
Target Name	CREB
Modification	Phospho
Other Names	CREB1, CREB-1, Transactivator protein, CREB
Accession No.	Swiss-Prot#: P16220NCBI Gene ID: 1385
Uniprot	P16220
GeneID	1385;
Target Species	human
Calculated MW	43kd
Concentration	1.0mg/ml
Formulation	Liquid in 0.42% Potassium phosphate, 0.87% Sodium chloride, pH 7.3, 30% glycerol, and 0.01% sodium azide.
Storage	Store at -20°C

## Application Details

WB (1/500 - 1/1000)

## Images



Western blot analysis of CREB (pS111) expression in mouse kidney (A), rat kidney (B) whole cell lysates.

Note: This product is for in vitro research use only