

Estrogen Receptor- α (Phospho-Thr311) Antibody

Catalog No: #12474



Package Size: #12474-1 50ul #12474-2 100ul

Orders: order@signalwayantibody.comSupport: tech@signalwayantibody.com

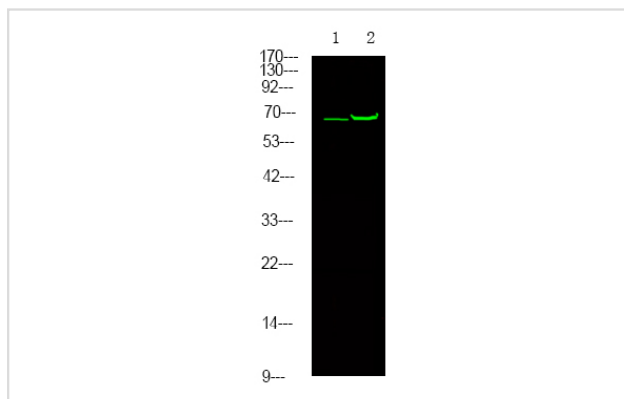
Description

Product Name	Estrogen Receptor- α (Phospho-Thr311) Antibody
Host Species	Rabbit
Clonality	Polyclonal
Purification	Antibodies were produced by immunizing rabbits with synthetic phosphopeptide and KLH conjugates. Antibodies were purified by affinity-chromatography using epitope-specific phosphopeptide. Non-phospho specific antibodies were removed by chromatography using non-phosphopeptide.
Applications	WB
Species Reactivity	Hu Ms Rt
Specificity	Estrogen Receptor- α (Phospho-Thr311) Antibody detects endogenous levels of Estrogen Receptor- α only when phosphorylated at EstrThr311
Immunogen Type	Peptide
Immunogen Description	A synthesized peptide derived from human Estrogen Receptor- α (Phospho-Thr311)
Target Name	Estrogen Receptor- α
Modification	Phospho
Other Names	ESR1, Era, ERalpha, Estrogen receptor, Estradiol receptor, ER-alpha, Estrogen receptor 1, NR3A1, ER, ESR, ESRA, Estrogen receptor alpha
Accession No.	Swiss-Prot#: P03372NCBI Gene ID: 2099
Uniprot	P03372
GeneID	2099;
Target Species	human
Calculated MW	66kd
Concentration	1.0mg/ml
Formulation	Rabbit IgG in phosphate buffered saline (without Mg ²⁺ and Ca ²⁺), pH 7.4, 150mM NaCl, 0.02% sodium azide and 50% glycerol.
Storage	Store at -20°C

Application Details

Western blotting: 1:1000

Images



Western Blot analysis of lysates of 1. Hela cell and 2. Hela cell Serum-free treated, using primary antibody at 1:1000 dilution.

Note: This product is for in vitro research use only