

Beta Actin antibody

Catalog No: #22957

Orders: order@signalwayantibody.com

Support: tech@signalwayantibody.com

Description

Product Name	Beta Actin antibody
Host Species	Rabbit
Clonality	Polyclonal
Purification	Purified by antigen-affinity chromatography.
Applications	WB IHC IF
Species Reactivity	Hu
Immunogen Type	Peptide
Immunogen Description	Synthetic peptide contain a sequence corresponding to a region within amino acids 309 and 368 of Human ACTB
Target Name	Beta Actin
Accession No.	Swiss-Prot:P60709Gene ID:60
Uniprot	P60709
GeneID	60;
Concentration	1mg/ml
Formulation	Supplied in 0.1M Tris-buffered saline with 10% Glycerol (pH7.0). 0.01% Thimerosal was added as a preservative.
Storage	Store at -20°C for long term preservation (recommended). Store at 4°C for short term use.

Application Details

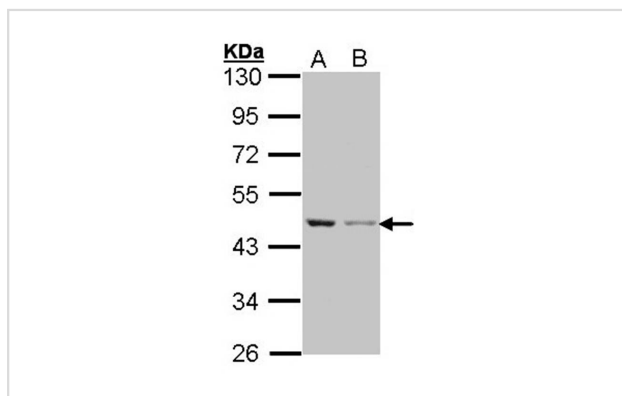
Predicted MW: 42kd

Western blotting: 1:500-1:3000

Immunohistochemistry: 1:100-1:250

Immunofluorescence: 1:100-1:200

Images



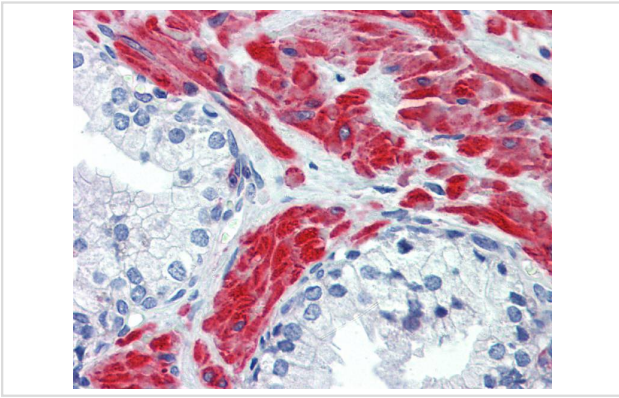
Sample (30 ug of whole cell lysate)

A: A431

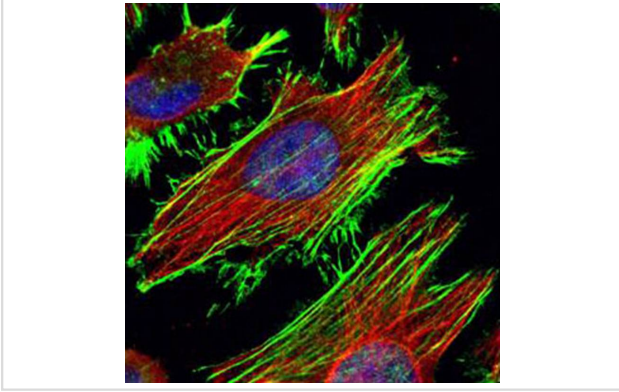
B: H1299

10% SDS PAGE

Primary antibody diluted at 1: 1000



Immunohistochemical analysis of paraffin-embedded Prostate, using beta Actin antibody(10 ug/ml).



Confocal immunofluorescence analysis (Olympus FV10i) of methanol-fixed HeLa, using beta Actin antibody (Green) at 1: 500 dilution and alpha-tubulin antibody (Red) at 1: 2000.

Background

This gene encodes one of six different actin proteins. Actins are highly conserved proteins that are involved in cell motility, structure, and integrity. This actin is a major constituent of the contractile apparatus and one of the two nonmuscle cytoskeletal actins. [provided by RefSeq]

Note: This product is for in vitro research use only