

STAT4 (Phospho-Ser721) Antibody

Catalog No: #12485

Package Size: #12485-1 50ul #12485-2 100ul

Orders: order@signalwayantibody.com

Support: tech@signalwayantibody.com

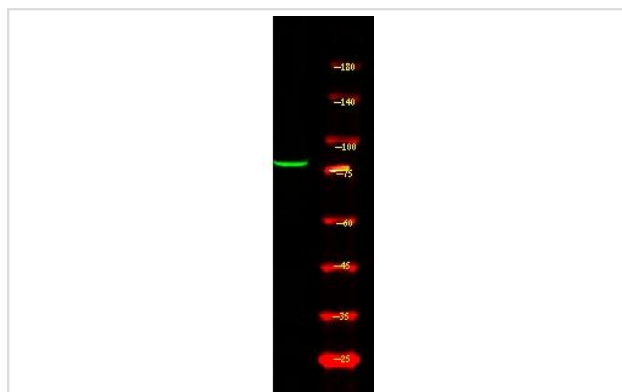
Description

Product Name	STAT4 (Phospho-Ser721) Antibody
Host Species	Rabbit
Clonality	Polyclonal
Purification	Antibodies were produced by immunizing rabbits with synthetic phosphopeptide and KLH conjugates. Antibodies were purified by affinity-chromatography using epitope-specific phosphopeptide. Non-phospho specific antibodies were removed by chromatography using non-phosphopeptide.
Applications	IHC;WB
Species Reactivity	Human;Mouse
Specificity	STAT4 (Phospho-Ser721) Antibody detects endogenous levels of STAT4 only when phosphorylated at Ser721
Immunogen Type	Peptide
Immunogen Description	A synthesized peptide derived from human STAT4 (Phospho-Ser721)
Target Name	STAT4
Modification	Phospho
Other Names	STAT4, SLEB11
Accession No.	Swiss-Prot#: Q14765NCBI Gene ID: 6775
Uniprot	Q14765
GeneID	6775;
Target Species	human
Calculated MW	86kd
Concentration	1.0 mg/ml
Formulation	Liquid in PBS containing 50% glycerol, and 0.02% sodium azide.
Storage	Store at -20°C

Application Details

WB 1:500-2000 IHC 1:50-200

Images



Western Blot analysis of 1 HeLa cell, 2 LPS 100ng/mL 30min treated, using primary antibody at 1:1000 dilution. Secondary antibody was diluted at 1:10000

Note: This product is for in vitro research use only