

alpha sarcomeric Actin antibody

Catalog No: #22958

Orders: order@signalwayantibody.com

Support: tech@signalwayantibody.com

Description

Product Name	alpha sarcomeric Actin antibody
Host Species	Rabbit
Clonality	Polyclonal
Purification	Purified by antigen-affinity chromatography.
Applications	WB IHC
Species Reactivity	Hu
Immunogen Type	Recombinant Protein
Immunogen Description	Recombinant protein fragment contain a sequence corresponding to a region within amino acids 99 and 364 of Human ACTC1
Target Name	alpha sarcomeric Actin
Accession No.	Swiss-Prot:P68032Gene ID:70
Uniprot	P68032
GeneID	70;
Concentration	1.56 mg/ml
Formulation	Supplied in 0.1M Tris-buffered saline with 10% Glycerol (pH7.0). 0.01% Thimerosal was added as a preservative.
Storage	Store at -20°C for long term preservation (recommended). Store at 4°C for short term use.

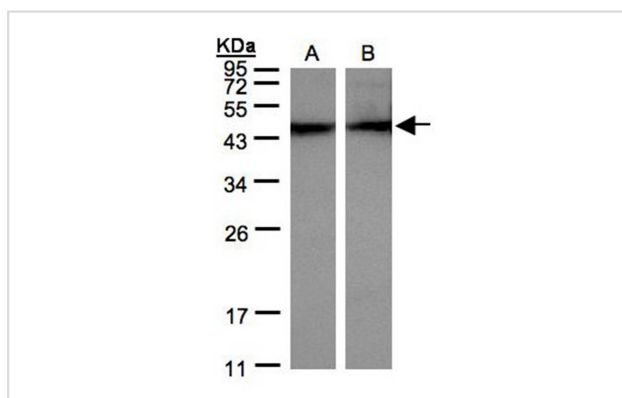
Application Details

Predicted MW: 42kd

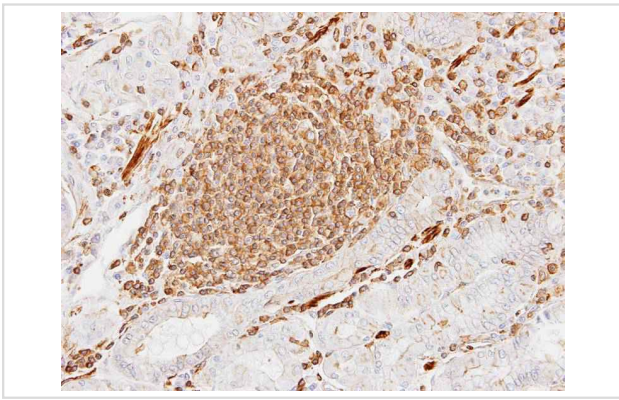
Western blotting: 1:500-1:3000

Immunohistochemistry: 1:100-1:250

Images



Sample(30 ug of whole cell lysate)
A: HeLa S3
B: MOLT4
12% SDS PAGE
Primary antibody diluted at 1: 500



Immunohistochemical analysis of paraffin-embedded Gastric CA, using alpha Actin (cardiac muscle) antibody at 1: 100 dilution.

Background

Actins are highly conserved proteins that are involved in various types of cell motility. Polymerization of globular actin (G-actin) leads to a structural filament (F-actin) in the form of a two-stranded helix. Each actin can bind to four others. The protein encoded by this gene belongs to the actin family which is comprised of three main groups of actin isoforms, alpha, beta, and gamma. The alpha actins are found in muscle tissues and are a major constituent of the contractile apparatus. Defects in this gene have been associated with idiopathic dilated cardiomyopathy (IDC) and familial hypertrophic cardiomyopathy (FHC). [provided by RefSeq]

Note: This product is for in vitro research use only