

CAMKK1/2 (Phospho-Ser458/495) Antibody

Catalog No: #12492



Package Size: #12492-1 50ul #12492-2 100ul

Orders: order@signalwayantibody.comSupport: tech@signalwayantibody.com

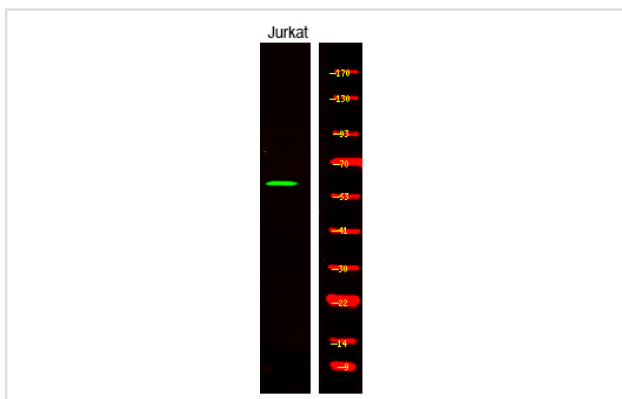
Description

Product Name	CAMKK1/2 (Phospho-Ser458/495) Antibody
Host Species	Rabbit
Clonality	Polyclonal
Purification	Antibodies were produced by immunizing rabbits with synthetic phosphopeptide and KLH conjugates. Antibodies were purified by affinity-chromatography using epitope-specific phosphopeptide. Non-phospho specific antibodies were removed by chromatography using non-phosphopeptide.
Applications	WB
Species Reactivity	Hu Ms Rt
Specificity	CAMKK1/2 (Phospho-Ser458/495) Antibody detects endogenous levels of CAMKK1/2 only when phosphorylated at Ser458/495
Immunogen Type	Peptide
Immunogen Description	A synthesized peptide derived from human CAMKK1/2 (Phospho-Ser458/495)
Target Name	CAMKK1/2
Modification	Phospho
Other Names	CAMKK1, CaM-kinase IV kinase, CaM-kinase kinase 1, CaM-kinase kinase alpha, CAMKK alpha protein, CAMKKA, CaM-KK 1, CaMCK, CaM-KK alpha, CaMCK 1, CaMCK alpha, CAMKKalpha
Accession No.	Swiss-Prot#: Q8N5S9/Q96RR4NCBI Gene ID: 84254/10645
Uniprot	Q8N5S9
GeneID	84254;
Target Species	human
Calculated MW	64kd
Concentration	1.0mg/ml
Formulation	Rabbit IgG in phosphate buffered saline (without Mg ²⁺ and Ca ²⁺), pH 7.4, 150mM NaCl, 0.02% sodium azide and 50% glycerol.
Storage	Store at -20°C

Application Details

Western blotting: 1:1000

Images



Western Blot analysis of lysates of Jurkat cell, using primary antibody at 1:1000 dilution.

Note: This product is for in vitro research use only