

CDK1/CDC2 (Phospho-Thr161) Antibody

Catalog No: #12493

Package Size: #12493-1 50ul #12493-2 100ul

Orders: order@signalwayantibody.comSupport: tech@signalwayantibody.com

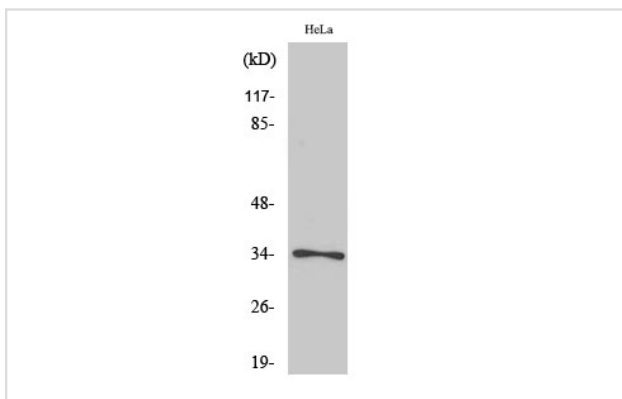
Description

Product Name	CDK1/CDC2 (Phospho-Thr161) Antibody
Host Species	Rabbit
Clonality	Polyclonal
Purification	Antibodies were produced by immunizing rabbits with synthetic phosphopeptide and KLH conjugates. Antibodies were purified by affinity-chromatography using epitope-specific phosphopeptide. Non-phospho specific antibodies were removed by chromatography using non-phosphopeptide.
Applications	WB
Species Reactivity	Hu Ms Rt
Specificity	CDK1/CDC2 (Phospho-Thr161) Antibody detects endogenous levels of CDK1/CDC2 only when phosphorylated at Thr161
Immunogen Type	Peptide
Immunogen Description	A synthesized peptide derived from human CDK1/CDC2 (Phospho-Thr161)
Target Name	CDK1/CDC2
Modification	Phospho
Other Names	CDK1, CDC28A, CDC2, CDKN1, Cyclin-dependent kinase 1, p34 protein kinase, p34CDC2, CDC2a, Cell cycle controller CDC2, Cell division protein kinase 1, PSTAIR
Accession No.	Swiss-Prot#: P06493NCBI Gene ID: 983
Uniprot	P06493
GeneID	983;
Target Species	human
Calculated MW	34kd
Concentration	1.0mg/ml
Formulation	Liquid in PBS containing 50% glycerol, 0.5% BSA and 0.02% sodium azide.
Storage	Store at -20°C

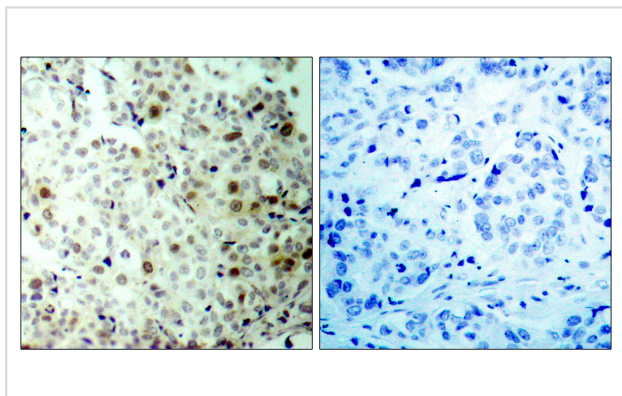
Application Details

Western blotting: 1:1000

Images



Western Blot analysis of HeLa cells using Phospho-Cdc2 (T161) Polyclonal Antibody diluted at 1:1000



Immunohistochemistry analysis of paraffin-embedded human breast carcinoma, using CDC2 (Phospho-Thr161) Antibody. The picture on the right is blocked with the phospho peptide.

Note: This product is for in vitro research use only