

## EPHA8 (Phospho-Tyr838) Antibody

Catalog No: #12499

Package Size: #12499-1 50ul #12499-2 100ul

Orders: [order@signalwayantibody.com](mailto:order@signalwayantibody.com)Support: [tech@signalwayantibody.com](mailto:tech@signalwayantibody.com)

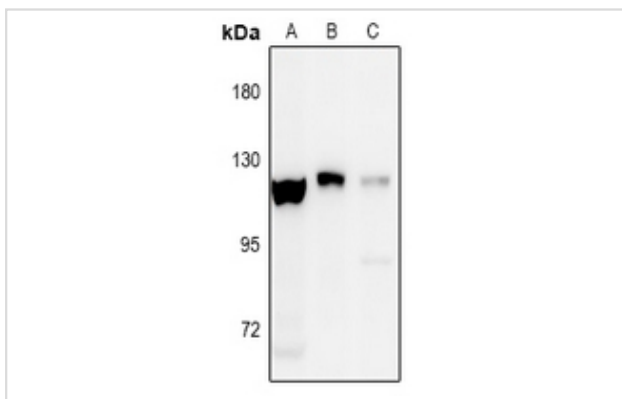
## Description

Product Name	EPHA8 (Phospho-Tyr838) Antibody
Host Species	Rabbit
Clonality	Polyclonal
Purification	Antibodies were produced by immunizing rabbits with synthetic phosphopeptide and KLH conjugates. Antibodies were purified by affinity-chromatography using epitope-specific phosphopeptide. Non-phospho specific antibodies were removed by chromatography using non-phosphopeptide.
Applications	WB
Species Reactivity	Hu Ms
Specificity	EPHA8 (Phospho-Tyr838) Antibody detects endogenous levels of EPHA8 only when phosphorylated at Tyr838
Immunogen Type	Peptide
Immunogen Description	A synthesized peptide derived from human EPHA8 (Phospho-Tyr838)
Target Name	EPHA8
Modification	Phospho
Other Names	EPHA8, EEK, EPH- and ELK-related kinase, EK3, EPH receptor A8, EPH-like kinase 3, Ephrin type-A receptor 8, HEK3, Hydroxyaryl-protein kinase, KIAA1459, Tyrosylprotein kinase, Hek3 kinase, Protein-tyrosine kinase
Accession No.	Swiss-Prot#: P29322NCBI Gene ID: 2046
Uniprot	P29322
GeneID	2046;
Target Species	human
Calculated MW	111kd
Concentration	1.0mg/ml
Formulation	Liquid in 0.42% Potassium phosphate, 0.87% Sodium chloride, pH 7.3, 30% glycerol, and 0.01% sodium azide.
Storage	Store at -20°C

## Application Details

WB (1/500 - 1/1000)

## Images



Western blot analysis of EPHA8 (pY838) expression in HeLa (A), mouse spleen (B), rat kidney (C) whole cell lysates.

---

Note: This product is for in vitro research use only