

Angiotensin antibody

Catalog No: #22960

Orders: order@signalwayantibody.com

Support: tech@signalwayantibody.com

Description

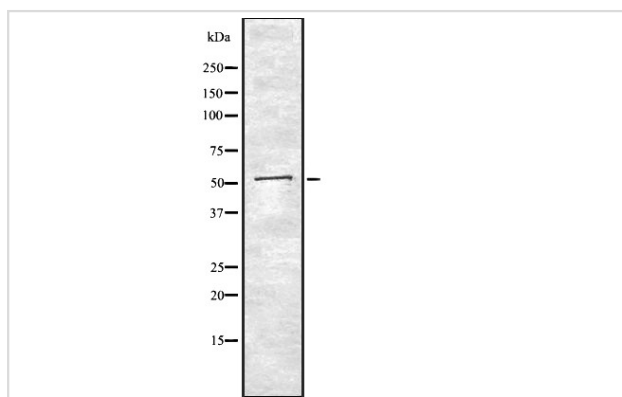
Product Name	Angiotensin antibody
Host Species	Rabbit
Clonality	Polyclonal
Purification	Purified by antigen-affinity chromatography.
Applications	WB
Species Reactivity	Hu Ms
Immunogen Description	A synthesized peptide derived from human AGT
Target Name	Angiotensin
Accession No.	NCBI Gene ID: 183NCBI mRNA#: NM_000029NCBI Protein#: NP_000020
Uniprot	P01019
GeneID	183;
Concentration	1mg/ml
Formulation	Rabbit IgG in phosphate buffered saline , pH 7.4, 150mM NaCl, 0.02% sodium azide and 50% glycerol.
Storage	Store at -20°C for long term preservation (recommended). Store at 4°C for short term use.

Application Details

Predicted MW: 53kd

Western blotting: 1:1000-1:3000

Images



Western blot analysis AGT using K562 whole cell lysates

Background

The protein encoded by this gene, pre-angiotensinogen or angiotensinogen precursor, is expressed in the liver and is cleaved by the enzyme renin in response to lowered blood pressure. The resulting product, angiotensin I, is then cleaved by angiotensin converting enzyme (ACE) to generate the physiologically active enzyme angiotensin II. The protein is involved in maintaining blood pressure and in the pathogenesis of essential hypertension and preeclampsia. Mutations in this gene are associated with susceptibility to essential hypertension, and can cause renal tubular dysgenesis, a severe disorder of renal tubular development. Defects in this gene have also been associated with non-familial structural atrial fibrillation, and inflammatory bowel disease. [provided by RefSeq]

Note: This product is for in vitro research use only