

MST3 (Phospho-Thr18) Antibody

Catalog No: #12520



Package Size: #12520-1 50ul #12520-2 100ul

Orders: order@signalwayantibody.comSupport: tech@signalwayantibody.com

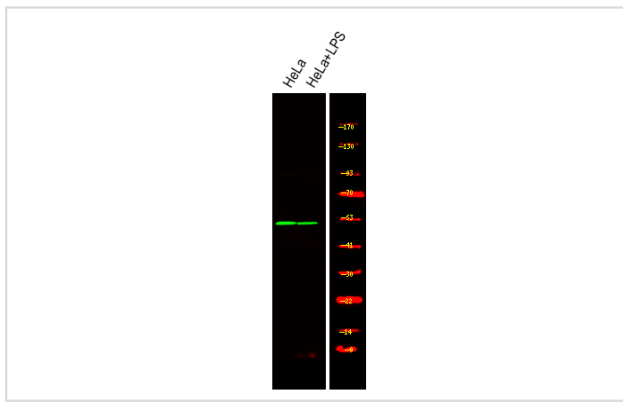
Description

Product Name	MST3 (Phospho-Thr18) Antibody
Host Species	Rabbit
Clonality	Polyclonal
Purification	Antibodies were produced by immunizing rabbits with synthetic phosphopeptide and KLH conjugates. Antibodies were purified by affinity-chromatography using epitope-specific phosphopeptide. Non-phospho specific antibodies were removed by chromatography using non-phosphopeptide.
Applications	WB
Species Reactivity	Hu
Specificity	MST3 (Phospho-Thr18) Antibody detects endogenous levels of MST3 only when phosphorylated at Thr18
Immunogen Type	Peptide
Immunogen Description	A synthesized peptide derived from human MST3 (Phospho-Thr18)
Target Name	MST3
Modification	Phospho
Other Names	STK24, MST-3, MST3, Serine/threonine kinase 24, STE20-like kinase 3, STE20-like kinase MST3, MST3B, STE20, Sterile 20-like kinase 3
Accession No.	Swiss-Prot#: Q9Y6E0NCBI Gene ID: 8428
Uniprot	Q9Y6E0
GeneID	8428;
Target Species	human
Calculated MW	50kd
Concentration	1.0mg/ml
Formulation	Rabbit IgG in phosphate buffered saline (without Mg ²⁺ and Ca ²⁺), pH 7.4, 150mM NaCl, 0.02% sodium azide and 50% glycerol.
Storage	Store at -20°C

Application Details

Western blotting: 1:1000

Images



Western Blot analysis of lysates of HeLa and HeLa treated with LPS, using primary antibody at 1:1000 dilution.

Note: This product is for in vitro research use only