

## NuaK1 (Phospho-Ser600) Antibody

Catalog No: #12522

Package Size: #12522-1 50ul #12522-2 100ul

Orders: [order@signalwayantibody.com](mailto:order@signalwayantibody.com)Support: [tech@signalwayantibody.com](mailto:tech@signalwayantibody.com)

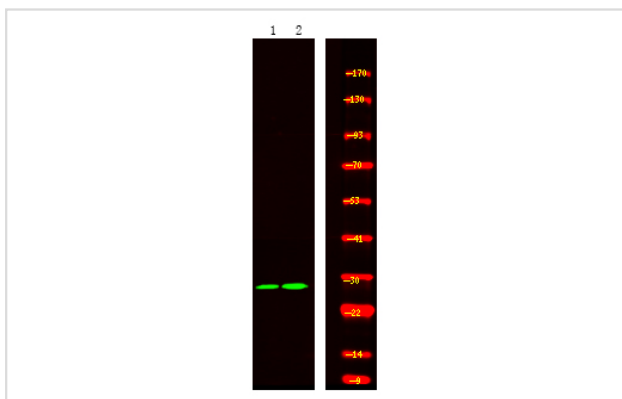
## Description

Product Name	NuaK1 (Phospho-Ser600) Antibody
Host Species	Rabbit
Clonality	Polyclonal
Purification	Antibodies were produced by immunizing rabbits with synthetic phosphopeptide and KLH conjugates. Antibodies were purified by affinity-chromatography using epitope-specific phosphopeptide. Non-phospho specific antibodies were removed by chromatography using non-phosphopeptide.
Applications	WB
Species Reactivity	Hu Ms
Specificity	NuaK1 (Phospho-Ser600) Antibody detects endogenous levels of NuaK1 only when phosphorylated at Ser600
Immunogen Type	Peptide
Immunogen Description	A synthesized peptide derived from human NuaK1 (Phospho-Ser600)
Target Name	NuaK1
Modification	Phospho
Other Names	NUAK1, KIAA0537, NUAK family SNF1-like kinase 1, OMPHK1, AMPK-related protein kinase 5, ARK5, Omphalocele kinase 1
Accession No.	Swiss-Prot#: O60285NCBI Gene ID: 9891
Uniprot	O60285
GeneID	9891;
Target Species	human
Calculated MW	75kd
Concentration	1.0mg/ml
Formulation	Rabbit IgG in phosphate buffered saline (without Mg <sup>2+</sup> and Ca <sup>2+</sup> ), pH 7.4, 150mM NaCl, 0.02% sodium azide and 50% glycerol.
Storage	Store at -20°C

## Application Details

Western blotting: 1:1000

## Images



Western Blot analysis of lysates of 1. mouse brain and 2. rat-brain, using primary antibody at 1:1000 dilution.

---

Note: This product is for in vitro research use only