

p38- γ/δ (Phospho-Tyr185/182) Antibody

Catalog No: #12523

Package Size: #12523-1 50ul #12523-2 100ul

Orders: order@signalwayantibody.comSupport: tech@signalwayantibody.com

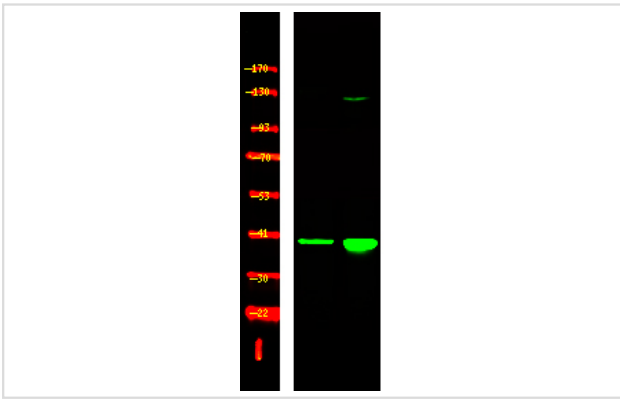
Description

Product Name	p38- γ/δ (Phospho-Tyr185/182) Antibody
Host Species	Rabbit
Clonality	Polyclonal
Purification	Antibodies were produced by immunizing rabbits with synthetic phosphopeptide and KLH conjugates. Antibodies were purified by affinity-chromatography using epitope-specific phosphopeptide. Non-phospho specific antibodies were removed by chromatography using non-phosphopeptide.
Applications	WB
Species Reactivity	Hu Ms Rt
Specificity	p38- γ/δ (Phospho-Tyr185/182) Antibody detects endogenous levels of p38- γ/δ only when phosphorylated at Tyr185/182
Immunogen Type	Peptide
Immunogen Description	A synthesized peptide derived from human p38- γ/δ (Phospho-Tyr185/182)
Target Name	p38- γ/δ
Modification	Phospho
Other Names	MAPK12, ERK5, ERK6, ERK-6, MAP kinase 12, MAPK 12, MAP kinase p38 gamma, SAPK3, p38-gamma, p38GAMMA, SAPK-3, ERK3, PRKM12
Accession No.	Swiss-Prot#: P53778/O15264NCBI Gene ID: 6300/5603
Uniprot	P53778
GeneID	6300;
Target Species	human
Calculated MW	43kd
Concentration	1.0mg/ml
Formulation	Rabbit IgG in phosphate buffered saline (without Mg ²⁺ and Ca ²⁺), pH 7.4, 150mM NaCl, 0.02% sodium azide and 50% glycerol.
Storage	Store at -20°C

Application Details

Western blotting: 1:1000

Images



Western Blot analysis of lysates of 1. HeLa cell and 2. HeLa cell treated with 100ng/mL LPS for 30min, using primary antibody at 1:1000 dilution.

Note: This product is for in vitro research use only