

PKG2 (Phospho-Ser126) Antibody

Catalog No: #12529

Package Size: #12529-1 50ul #12529-2 100ul

Orders: order@signalwayantibody.comSupport: tech@signalwayantibody.com

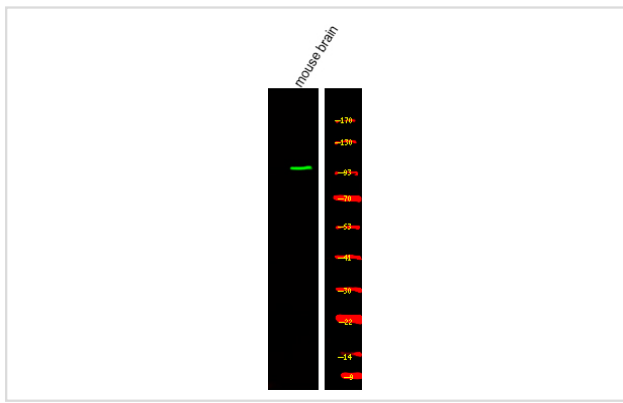
Description

Product Name	PKG2 (Phospho-Ser126) Antibody
Host Species	Rabbit
Clonality	Polyclonal
Purification	Antibodies were produced by immunizing rabbits with synthetic phosphopeptide and KLH conjugates. Antibodies were purified by affinity-chromatography using epitope-specific phosphopeptide. Non-phospho specific antibodies were removed by chromatography using non-phosphopeptide.
Applications	WB
Species Reactivity	Hu Ms Rt
Specificity	PKG2 (Phospho-Ser126) Antibody detects endogenous levels of PKG2 only when phosphorylated at Ser126
Immunogen Type	Peptide
Immunogen Description	A synthesized peptide derived from human PKG2 (Phospho-Ser126)
Target Name	PKG2
Modification	Phospho
Other Names	PRKG2, CGK 2, CGMP protein kinase II, CGKII, CGMP-PK type II, PKGII, PRKGR2, CGK2, CGMP kinase II
Accession No.	Swiss-Prot#: Q13237NCBI Gene ID: 5593
Uniprot	Q13237
GeneID	5593;
Target Species	human
Calculated MW	87kd
Concentration	1.0mg/ml
Formulation	Rabbit IgG in phosphate buffered saline (without Mg ²⁺ and Ca ²⁺), pH 7.4, 150mM NaCl, 0.02% sodium azide and 50% glycerol.
Storage	Store at -20°C

Application Details

Western blotting: 1:1000

Images



Western Blot analysis of lysates of mouse brain, using primary antibody at 1:1000 dilution.

Note: This product is for in vitro research use only