

ROS (Phospho-Tyr2274) Antibody

Catalog No: #12531

Package Size: #12531-1 50ul #12531-2 100ul

Orders: order@signalwayantibody.comSupport: tech@signalwayantibody.com

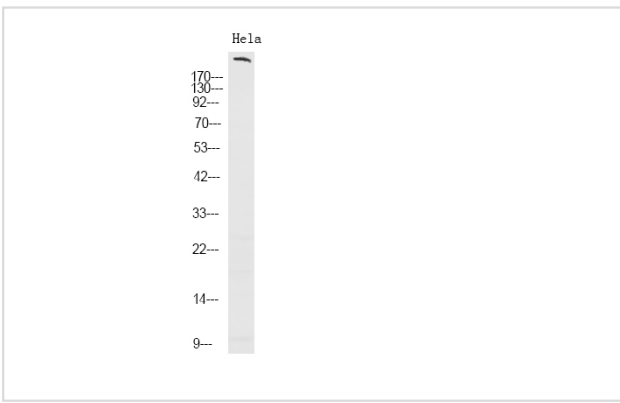
Description

Product Name	ROS (Phospho-Tyr2274) Antibody
Host Species	Rabbit
Clonality	Polyclonal
Purification	Antibodies were produced by immunizing rabbits with synthetic phosphopeptide and KLH conjugates. Antibodies were purified by affinity-chromatography using epitope-specific phosphopeptide. Non-phospho specific antibodies were removed by chromatography using non-phosphopeptide.
Applications	WB
Species Reactivity	Hu Ms Rt
Specificity	ROS (Phospho-Tyr2274) Antibody detects endogenous levels of ROS only when phosphorylated at Tyr2274
Immunogen Type	Peptide
Immunogen Description	A synthesized peptide derived from human ROS (Phospho-Tyr2274)
Target Name	ROS
Modification	Phospho
Other Names	ROS1, C-ros-1, c-ros, C-Ros receptor tyrosine kinase, MCF3, Proto-oncogene c-Ros, Proto-oncogene c-Ros-1, ROS
Accession No.	Swiss-Prot#: P08922NCBI Gene ID: 6098
Uniprot	P08922
GeneID	6098;
Target Species	human
Calculated MW	264kd
Concentration	1.0mg/ml
Formulation	Rabbit IgG in phosphate buffered saline (without Mg ²⁺ and Ca ²⁺), pH 7.4, 150mM NaCl, 0.02% sodium azide and 50% glycerol.
Storage	Store at -20°C

Application Details

Western blotting: 1:1000

Images



Western Blot analysis of lysates of HeLa cell, using primary antibody at 1:1000 dilution.

Note: This product is for in vitro research use only