

SIK (Phospho-Thr182) Antibody

Catalog No: #12533



Package Size: #12533-1 50ul #12533-2 100ul

Orders: order@signalwayantibody.comSupport: tech@signalwayantibody.com

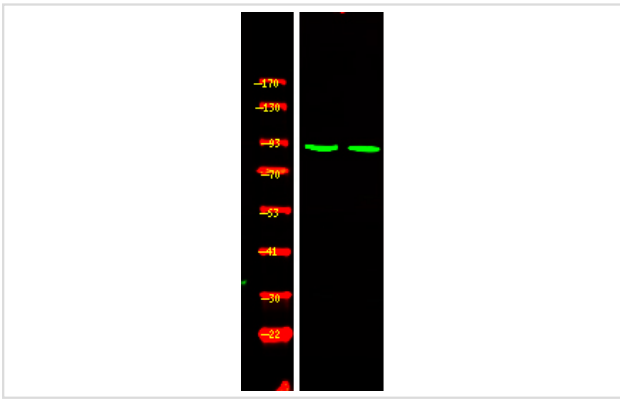
Description

Product Name	SIK (Phospho-Thr182) Antibody
Host Species	Rabbit
Clonality	Polyclonal
Purification	Antibodies were produced by immunizing rabbits with synthetic phosphopeptide and KLH conjugates. Antibodies were purified by affinity-chromatography using epitope-specific phosphopeptide. Non-phospho specific antibodies were removed by chromatography using non-phosphopeptide.
Applications	WB
Species Reactivity	Hu Rt
Specificity	SIK (Phospho-Thr182) Antibody detects endogenous levels of SIK only when phosphorylated at Thr182
Immunogen Type	Peptide
Immunogen Description	A synthesized peptide derived from human SIK (Phospho-Thr182)
Target Name	SIK
Modification	Phospho
Other Names	SIK1, KID2, Salt-inducible kinase, Salt-inducible kinase 1, Salt-inducible protein kinase, SIK, MSK, SIK-1, SNF1-like kinase, Myocardial SNF1-like kinase, QIK, Qin-induced kinase, SNF1LK
Accession No.	Swiss-Prot#: P57059NCBI Gene ID: 102724428
Uniprot	P57059
GeneID	102724428;150094;
Target Species	human
Calculated MW	85kd
Concentration	1.0mg/ml
Formulation	Rabbit IgG in phosphate buffered saline (without Mg ²⁺ and Ca ²⁺), pH 7.4, 150mM NaCl, 0.02% sodium azide and 50% glycerol.
Storage	Store at -20°C

Application Details

Western blotting: 1:1000

Images



Western Blot analysis of lysates of 1. MCF-7 cell and 2. MCF-7 cell treated with 100ng/mL LPS for 30min, using primary antibody at 1:1000 dilution.

Note: This product is for in vitro research use only