

TGFBR2 (Phospho-Tyr284) Antibody

Catalog No: #12534



Package Size: #12534-1 50ul #12534-2 100ul

Orders: order@signalwayantibody.comSupport: tech@signalwayantibody.com

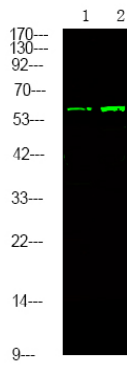
Description

Product Name	TGFBR2 (Phospho-Tyr284) Antibody
Host Species	Rabbit
Clonality	Polyclonal
Purification	Antibodies were produced by immunizing rabbits with synthetic phosphopeptide and KLH conjugates. Antibodies were purified by affinity-chromatography using epitope-specific phosphopeptide. Non-phospho specific antibodies were removed by chromatography using non-phosphopeptide.
Applications	WB
Species Reactivity	Hu Ms Rt
Specificity	TGFBR2 (Phospho-Tyr284) Antibody detects endogenous levels of TGFBR2 only when phosphorylated at Tyr284
Immunogen Type	Peptide
Immunogen Description	A synthesized peptide derived from human TGFBR2 (Phospho-Tyr284)
Target Name	TGFBR2
Modification	Phospho
Other Names	TGFBR2, AAT3, FAA3, HNPCC6, LDS2B, MFS2, TGF-beta receptor type-2, TGF-beta RII, TGFBR11, TGF-beta type II receptor, TGFbeta-RII, TbetaR-II, TGF beta Receptor II, TGF-beta receptor type II, TGF-beta receptor type IIB, TGFR-2, LDS1B, RIIC, TAAD2
Accession No.	Swiss-Prot#: P37173NCBI Gene ID: 7048
Uniprot	P37173
GeneID	7048;
Target Species	human
Calculated MW	65kd
Concentration	1.0mg/ml
Formulation	Rabbit IgG in phosphate buffered saline (without Mg ²⁺ and Ca ²⁺), pH 7.4, 150mM NaCl, 0.02% sodium azide and 50% glycerol.
Storage	Store at -20°C

Application Details

Western blotting: 1:1000

Images



Western Blot analysis of lysates of 1. A549 cell and 2. A549 cell treated with 100ng/mL LPS for 30min, using primary antibody at 1:1000 dilution.

Note: This product is for in vitro research use only