

BRCA1 (Phospho-Ser1497) Antibody

Catalog No: #12544



Package Size: #12544-1 50ul #12544-2 100ul

Orders: order@signalwayantibody.comSupport: tech@signalwayantibody.com

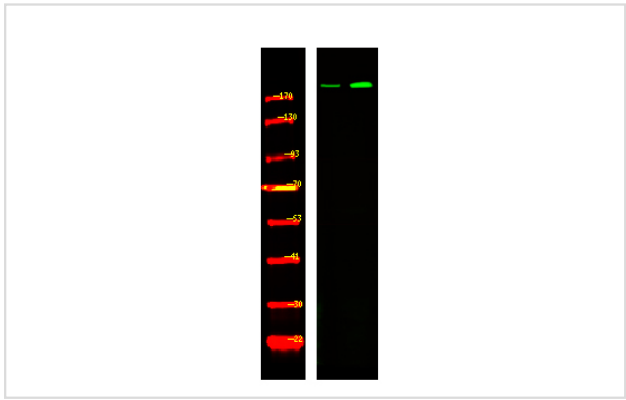
Description

Product Name	BRCA1 (Phospho-Ser1497) Antibody
Host Species	Rabbit
Clonality	Polyclonal
Purification	Antibodies were produced by immunizing rabbits with synthetic phosphopeptide and KLH conjugates. Antibodies were purified by affinity-chromatography using epitope-specific phosphopeptide. Non-phospho specific antibodies were removed by chromatography using non-phosphopeptide.
Applications	WB
Species Reactivity	Hu
Specificity	BRCA1 (Phospho-Ser1497) Antibody detects endogenous levels of BRCA1 only when phosphorylated at Ser1497
Immunogen Type	Peptide
Immunogen Description	A synthesized peptide derived from human BRCA1 (Phospho-Ser1497)
Target Name	BRCA1
Modification	Phospho
Other Names	BRCA1, BROVCA1, BRCC1, Breast cancer 1, early onset, PPP1R53, PSCP, PNCA4, RING finger protein 53, RNF53, BRCAI, Breast cancer 1 early onset, IRIS
Accession No.	Swiss-Prot#: P38398NCBI Gene ID: 672
Uniprot	P38398
GeneID	672;
Target Species	human
Calculated MW	220kd
Concentration	1.0mg/ml
Formulation	Rabbit IgG in phosphate buffered saline (without Mg ²⁺ and Ca ²⁺), pH 7.4, 150mM NaCl, 0.02% sodium azide and 50% glycerol.
Storage	Store at -20°C

Application Details

Western blotting: 1:1000

Images



Western Blot analysis of lysates of mouse brain (Left) and rat brain (Right), using primary antibody at 1:1000 dilution.

Note: This product is for in vitro research use only